

T H E
FAVOURITE

PRODUCTION DESIGN by FIONA CROMBIE

SET DECORATION by ALICE FELTON

SUPERVISING ART DIRECTION by LYNNE HUITSON

There is no date to this film. It is the early 18th century but exactly when is anyone's guess. Key historical figures are missing (where is Anne's husband of 25 years, PRINCE GEORGE!?) . The language is extremely 'colourful', the dance moves are pretty wild and wheelchairs, leg braces, rabbit hutches and birthday cakes did not exist. Anne didn't have 17 pet rabbits and duck and lobster races were probably not aristocratic pastimes. These script anachronisms invited us to invent, play and make ourselves laugh. This is our version of QUEEN ANNE'S world of extreme privilege, luxury, licence and debauchery.

Oh, and we only had £1.3 million to pull it off...



THE PALACE

The locations we worked in provided exquisite bones to build upon and endless inspiration for our detailing. We built wall panels and passage ways that matched the intricate joinery in the locations. We built secret doorways that disappeared behind our tapestries. Where the location ends and we begin should be seamless and invisible.

The locations were emptied and redressed with our furniture, tapestries, drapes and art.

We chose only to use shades of gold in our Palace fabrics with the pops of colour coming from the floral arrangements, the pyramids of sugary treats and, of course, the people.



QUEEN ANNE'S BEDROOM

THE FAVOURITE - QUEEN ANNE BED & BEDROOM CONCEPT



QUEEN ANNE'S BEDROOM

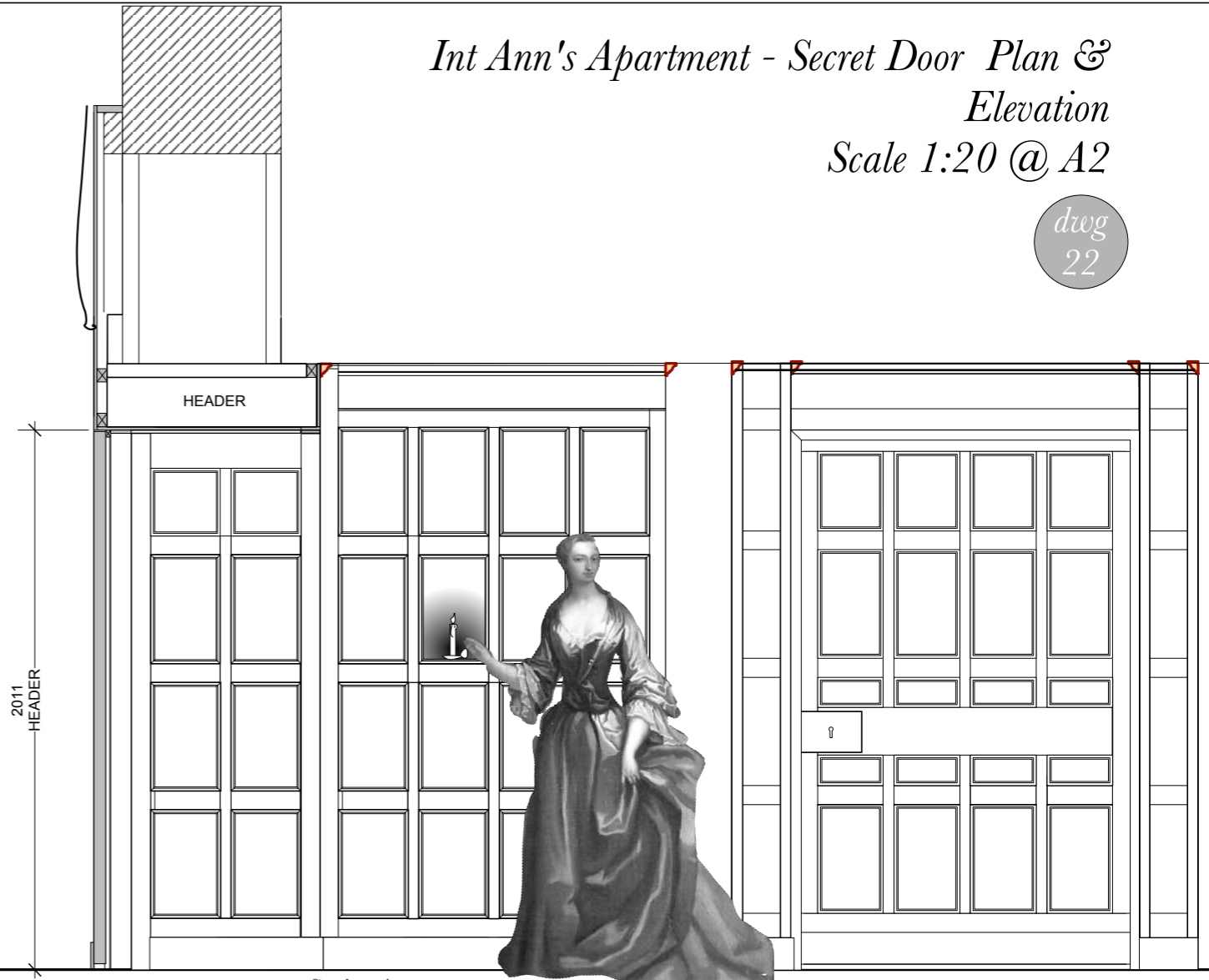
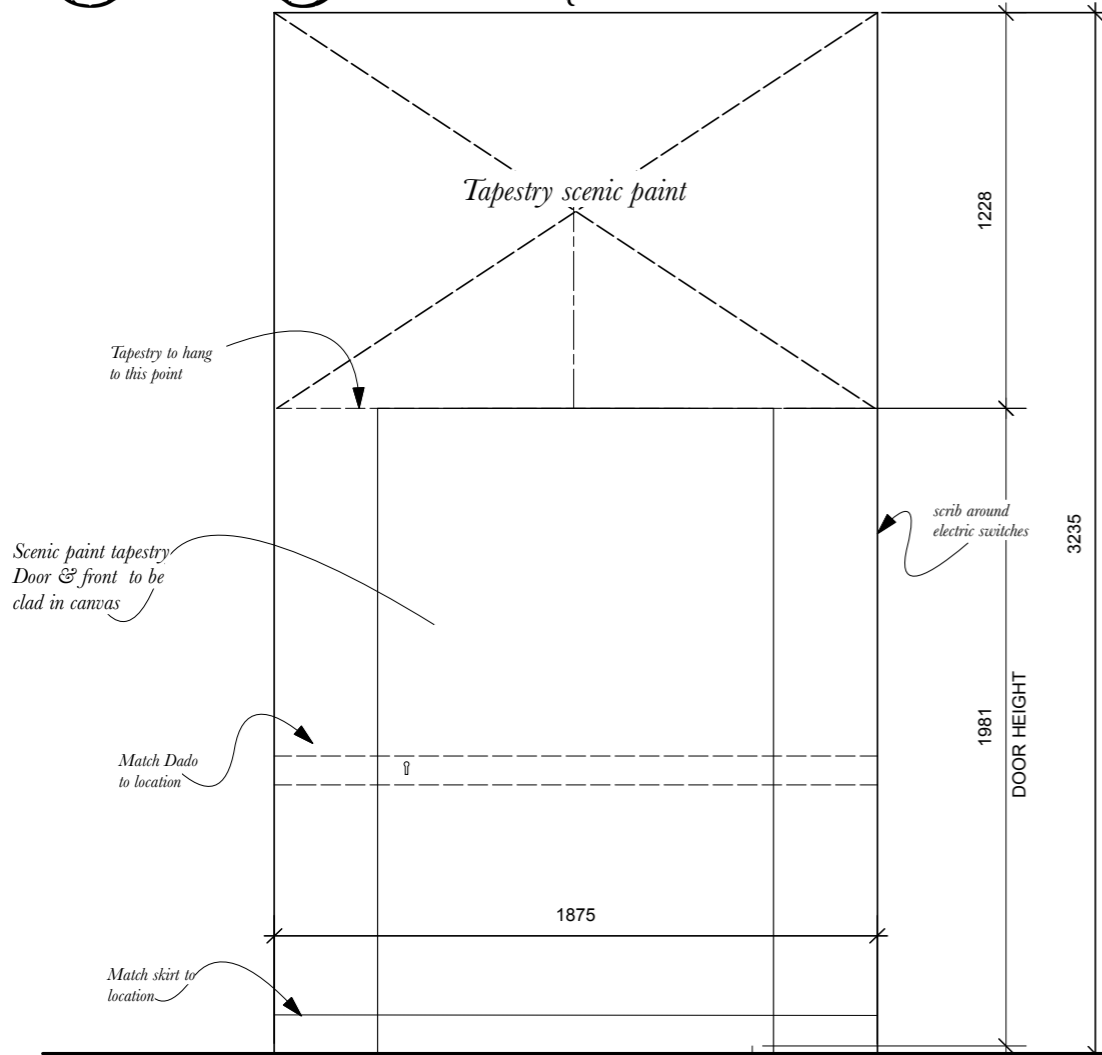




The Favourite

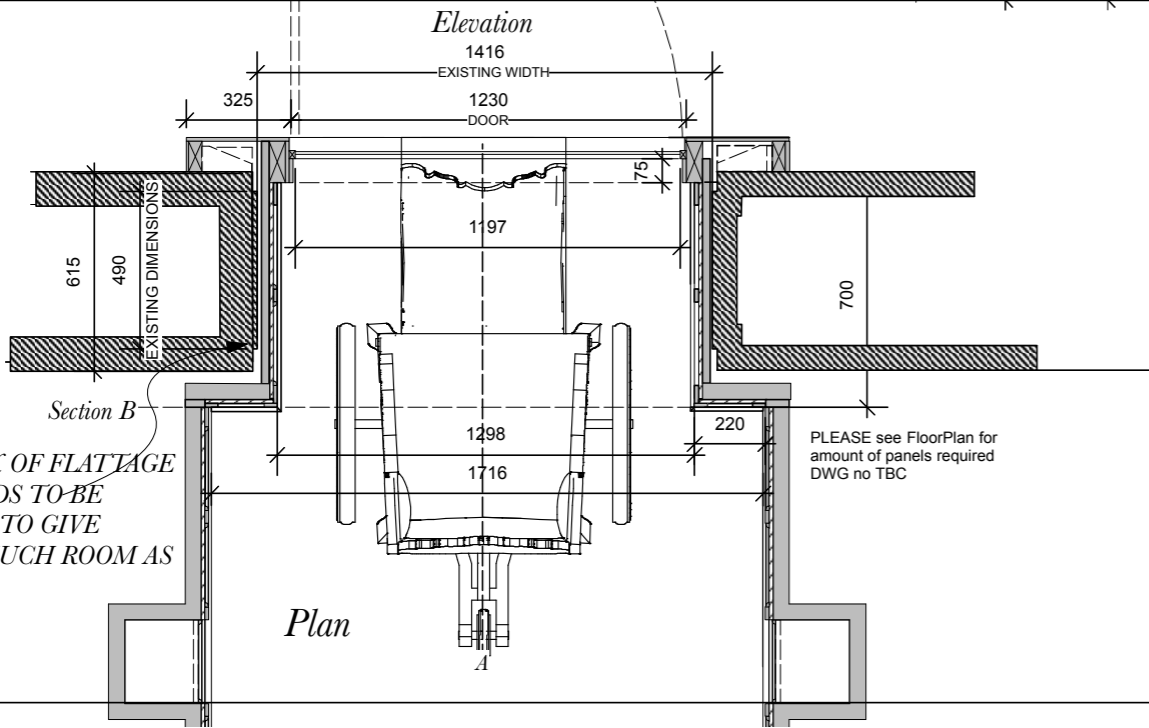
Int Ann's Apartment - Secret Door Plan & Elevation
Scale 1:20 @ A2

dwg 22



Section A

Section B



SEE DWG XX DETAIL OF DOOR

Plan



TAPESTRY DESIGN

THE BED

The jewel in the Queen's bedroom was her towering 4 meter tall bed, complete with 4 mattresses and layer upon layer of bedding. Our intention was to create a luxurious sanctuary that could be as messy and undone, or as meticulously made up, as the Queen's mental state. The bed was hand built, hand carved and painted.



The Favourite

FINIALS FOR SPENCER OR SET DEC TO SOURCE
FEATHERS PURCHAE VIA SET DEC

Int Queen Anne's Apartment ~ Queen Anne's Bed
Scale 1:25 @A3 & 1:8 Detail WIP5

REVISION 3 23/02/17

DWG 26

TRIMMED PELMET OVER PLEATS

PAINTED MOTIF

EXITING FRAME

COLUMNS TO HAVE CARVED DETAILS DESIGN TO FOLLOW

SECTION THROUGH TOP OF THE BED

drape height

VAULTED CEILING PLEATED

SPACE FOR HANGING CURTAINS

Existing top frame

SPACE TO FIT PLEATS

ADJUSTED HEIGHT OF EXISTING HEADBOARD
FILL IN PIECE TO BE FITTED

FILL IN PIECE

4000

2406

515

485

173

229

310

864

800

400

MATTRESS

1663

bottom headboard

485

3541

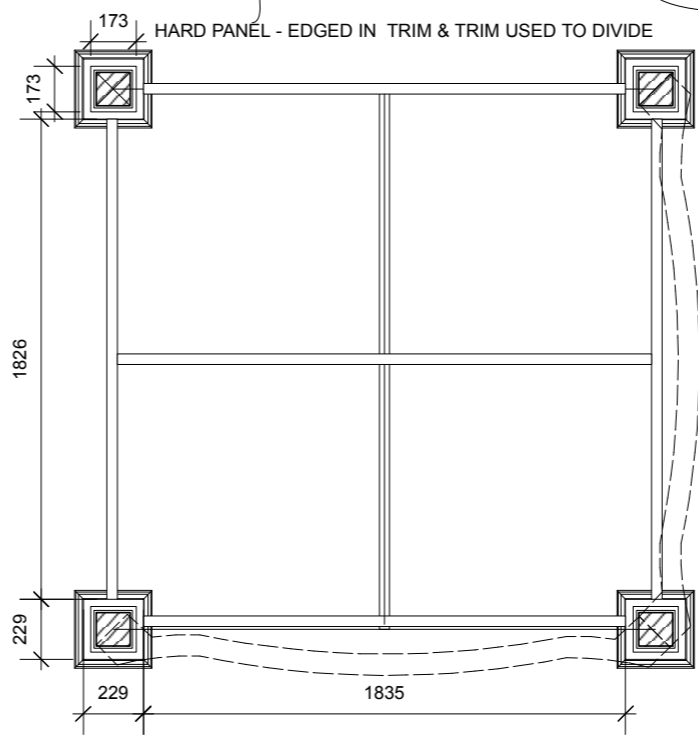
Side Elevation

Front Elevation

BOTTOM TRIM

BACK LINE FOR SPAVE TO HANG CURTAINS

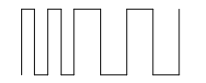
Top Plan



NOTE:

PLEASE USE EXISTING FRAME TO WORK TO - BED SHOULD BE RETANGULAR

0 0 0 0 1 1 M





BEDHEAD PAINTING AND CARVING DESIGNS

SARAH'S BEDROOM





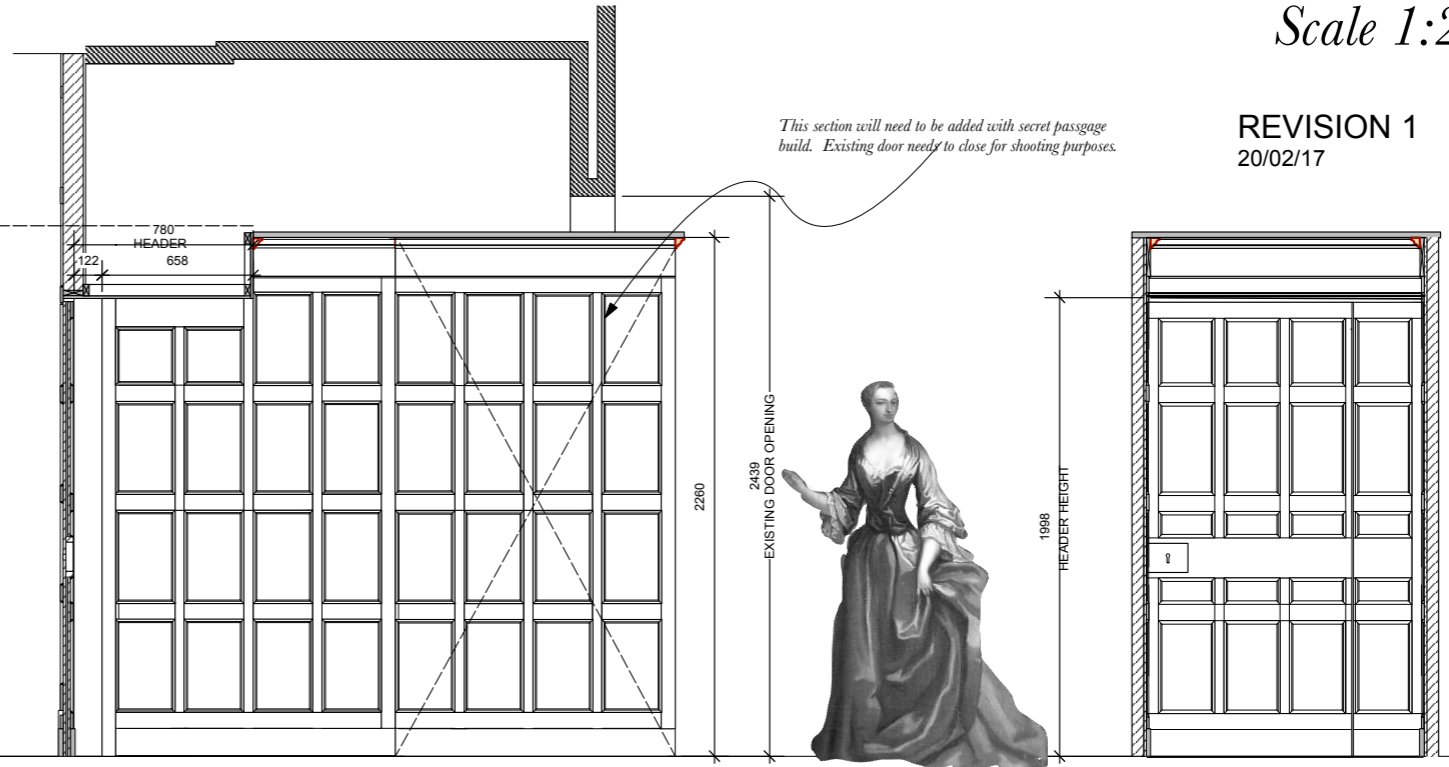
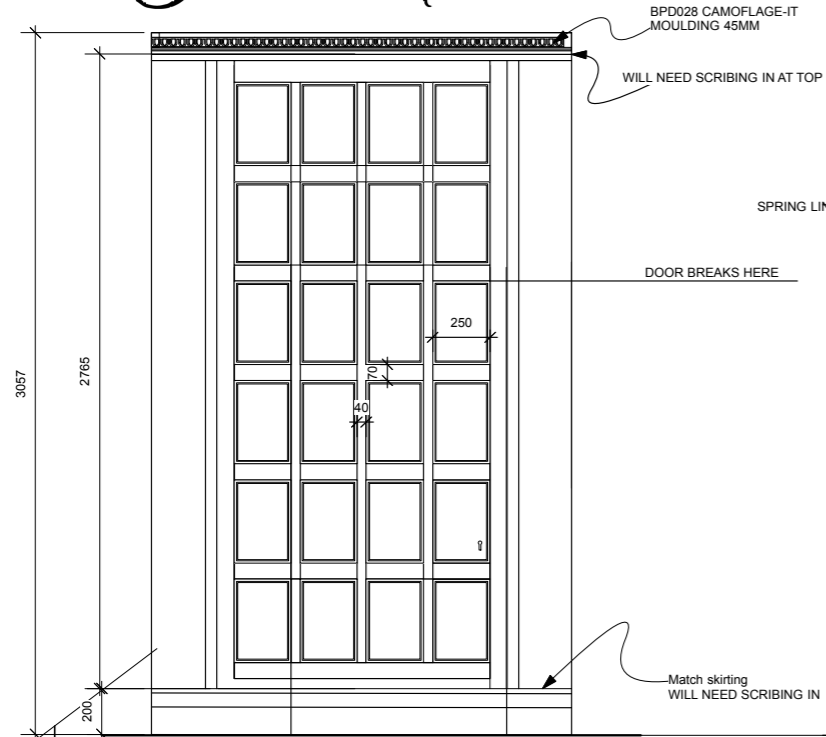


The Favourite

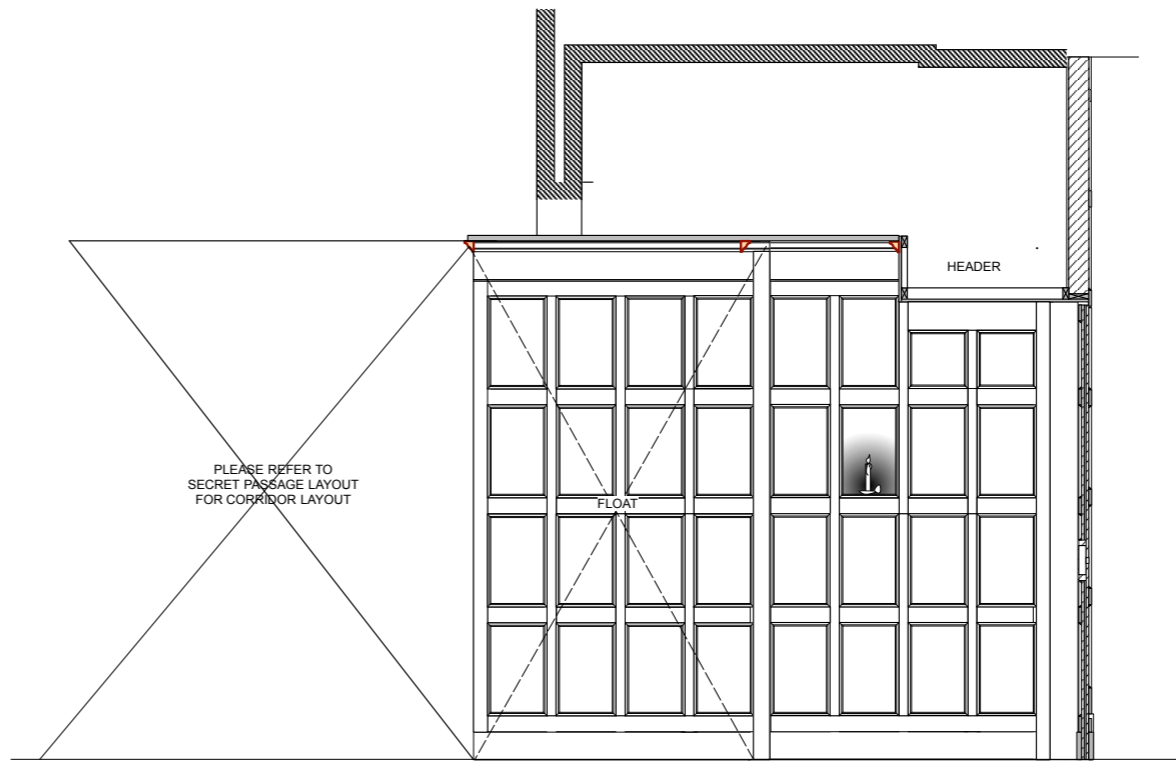
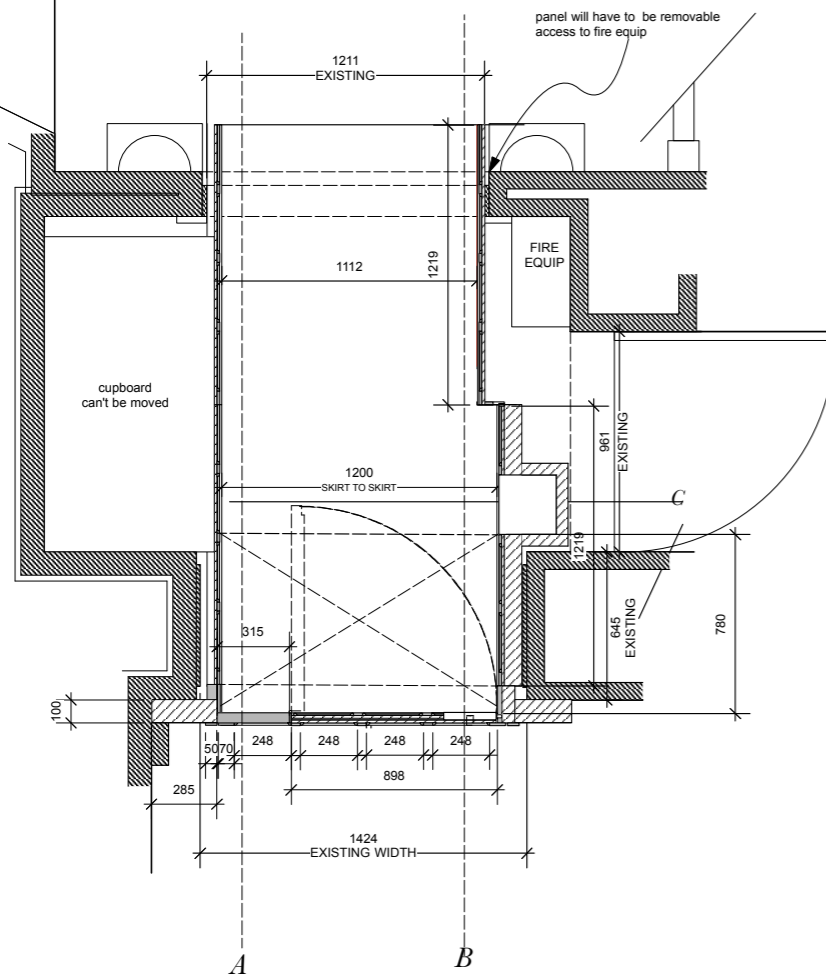
Int Sarah's Apartment ~ Secret Door & Passage Entrance Elevations Scale 1:20 @ A2

REVISION 1
20/02/17

DWG
20



ELEVATION A

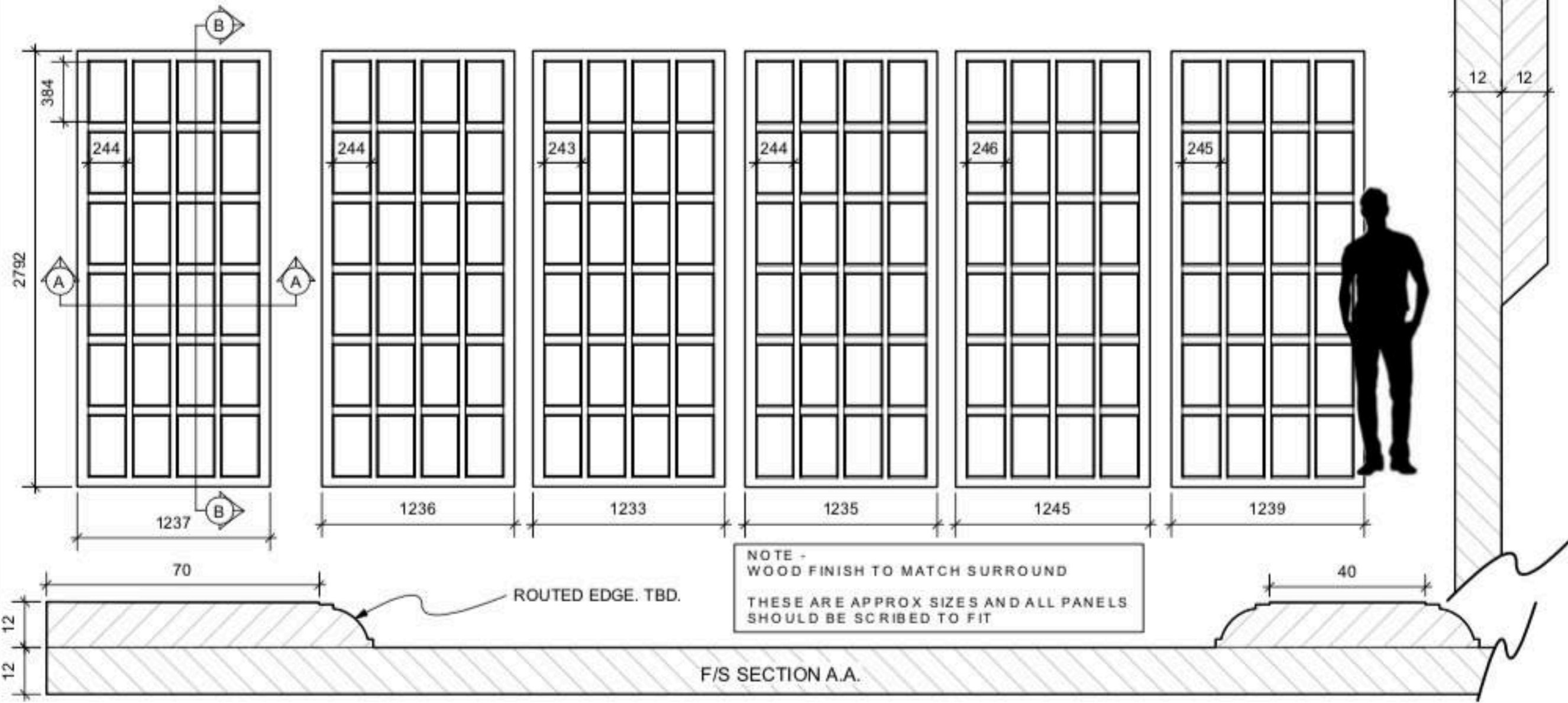


ELEVATION B

please use this drawing with DWG 21

The Favourite

INT. SARAH'S BEDROOM - WOODEN PANELLING (BOOKCASE COVERS)
SCALE - 1:25 @ A3



ABIGAIL'S BEDROOM

THE FAVOURITE - ABIGAIL'S BEDROOM CONCEPT



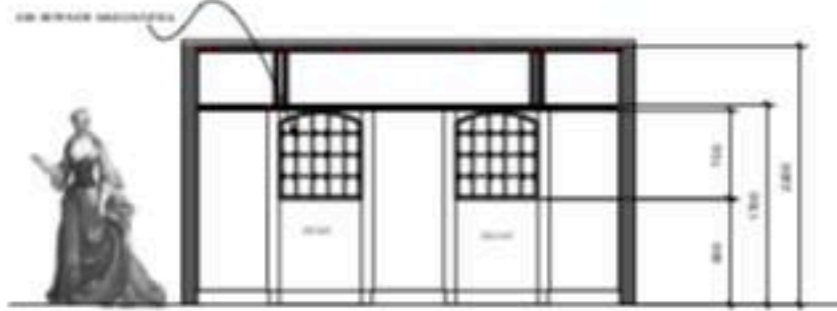




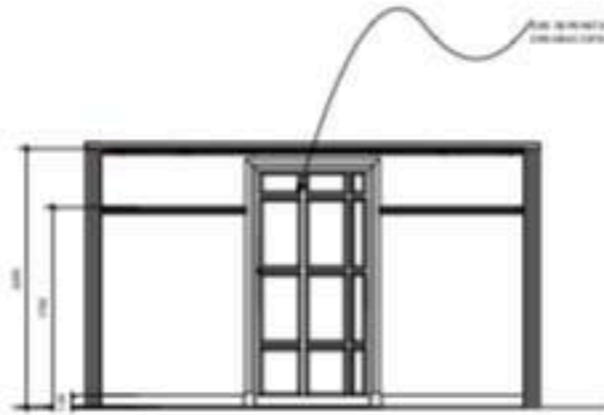
The Favourite

INT ABIGAIL'S ROOM
 SCALE 1:20 @A0
 REVISION 1 -10/03/17

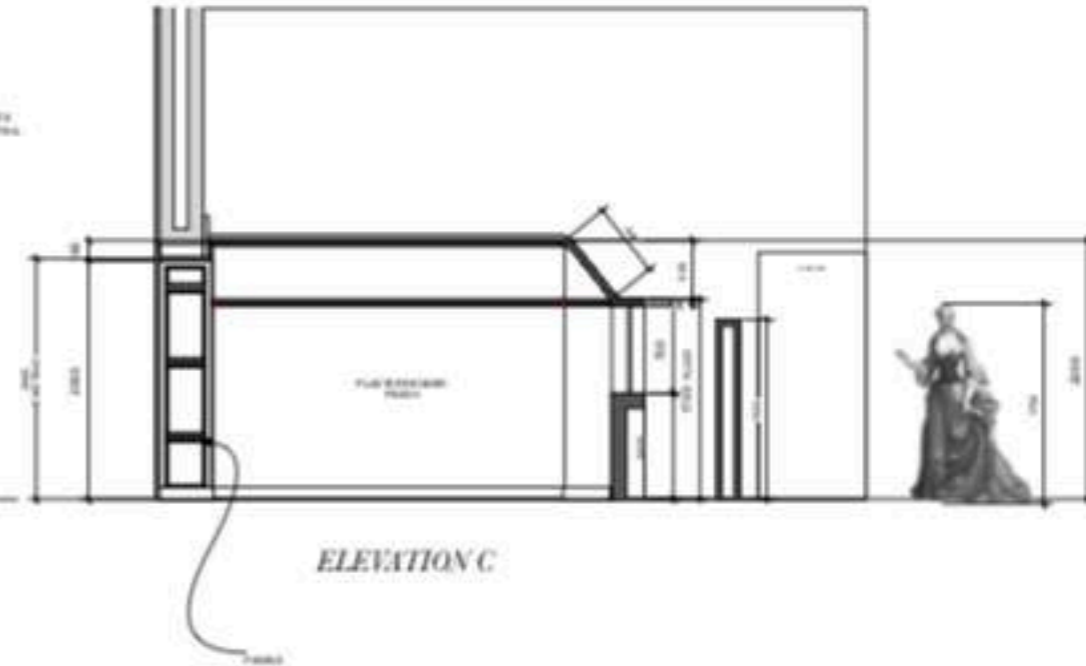
DWG:
17



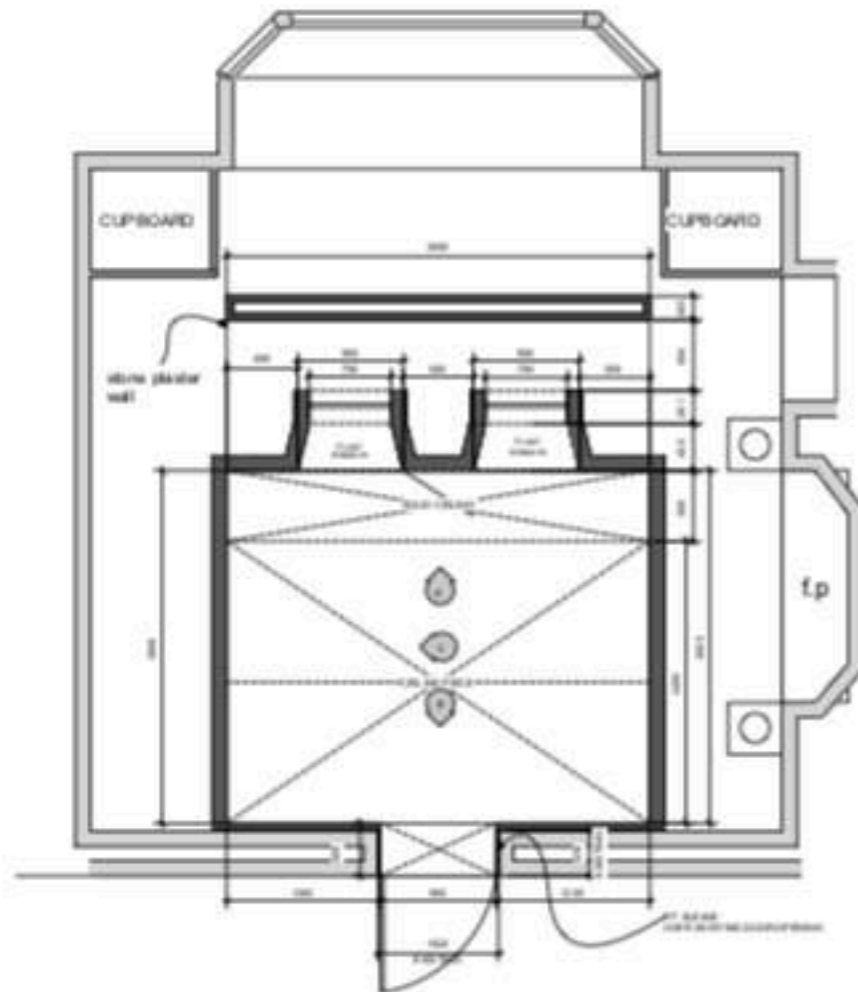
ELEVATION A



ELEVATION B



ELEVATION C



CEILING PIECE

NOTES

KEEPING EXISTING FLOOR

PLASTER RENDER FINISH

WINDOWS TO FLOAT

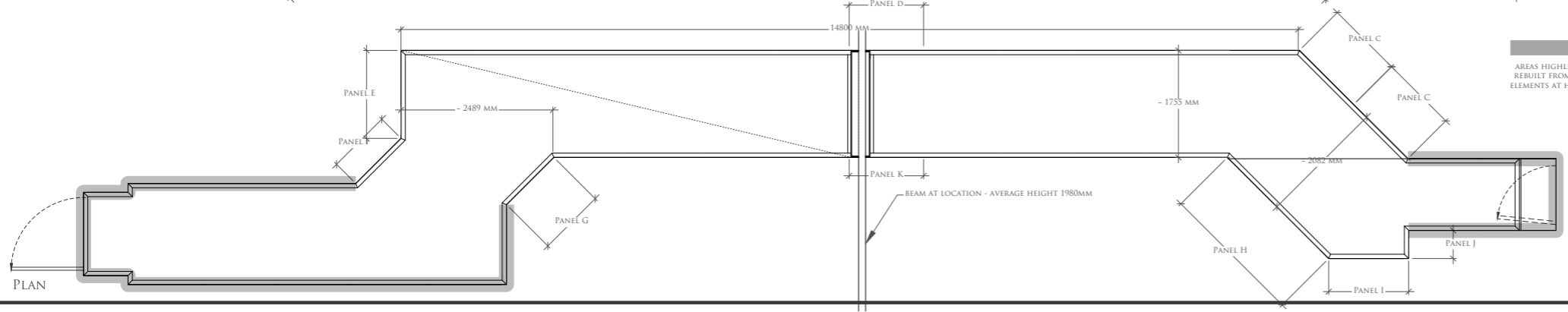
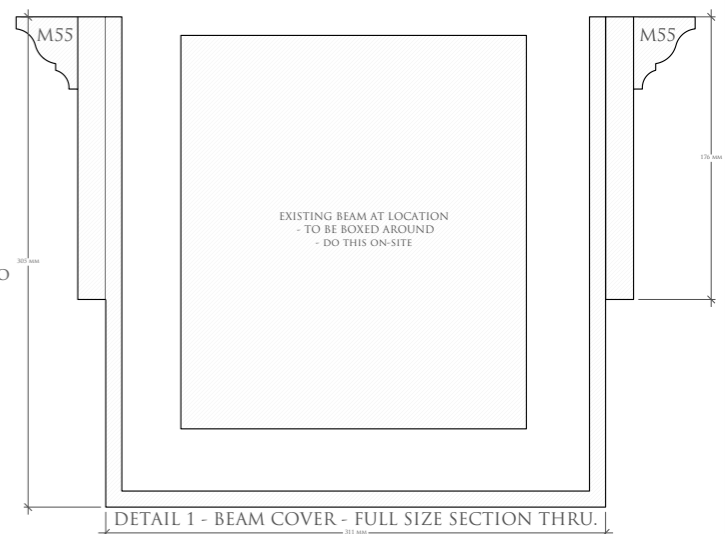
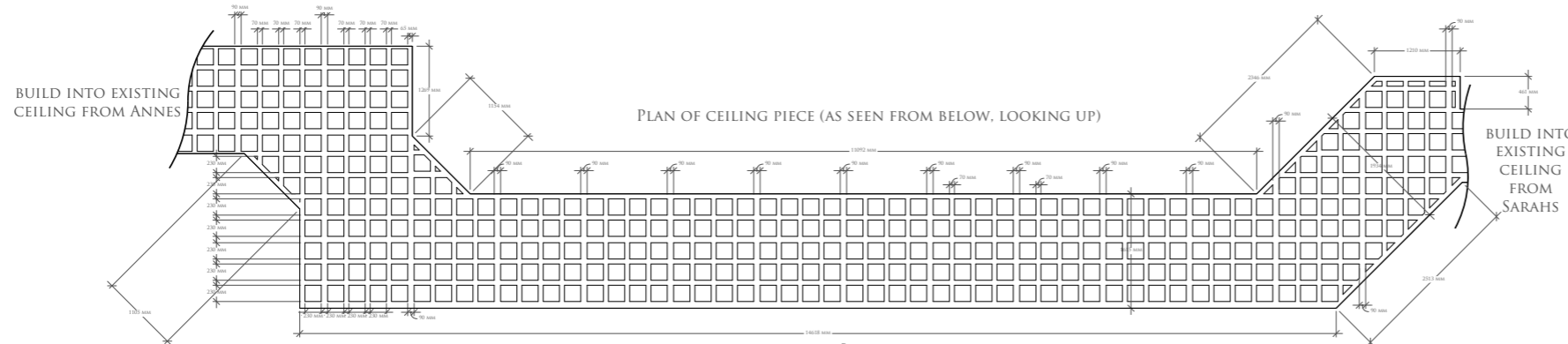
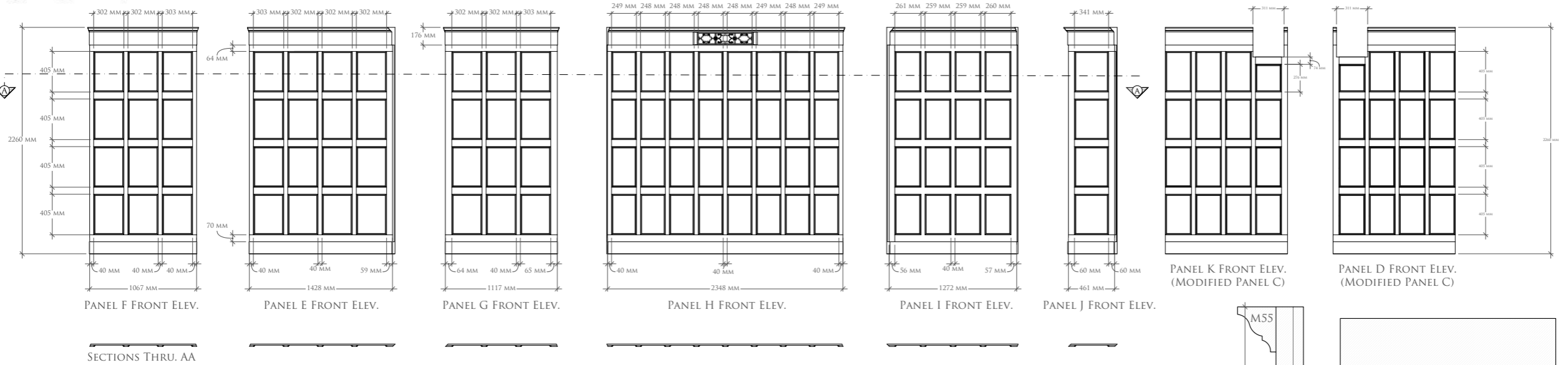
PLEASE NOTE ADDITION OF PLASTER BRICK WALL FOR SHOOT OFF IN REVISION! DETAILS TO FOLLOW

The Favourite	
NO.	DESCRIPTION
1	REVISION 1
2	REVISION 2
3	REVISION 3
4	REVISION 4
5	REVISION 5
6	REVISION 6
7	REVISION 7
8	REVISION 8
9	REVISION 9
10	REVISION 10

THE SECRET CORRIDOR



The Favourite SECRET PASSAGE FULL BUILD - AT LOSELEY HOUSE TITHE BARN - ADDITIONAL PANELS D/E/F/G/H/I/J/K DETAILS @ 1:10, DETAIL 2 - CEILING PLAN @ 1:20 & DETAIL 1 - BEAM COVER AT 1:1 - DWG NO. 83



AREAS HIGHLIGHTED GREY - RESULT FROM PACK-STRUCK ELEMENTS AT HATFIELD HOUSE

FINISHED TO MATCH EXISTING PANELS FROM HATFIELD HOUSE

TO BE READ WITH DWGS:
 14 - PANEL B DESIGN
 15 - PANEL C DESIGN
 20 - SARAH'S APT - SECRET DOOR
 32 - ANNES SECRET PASSAGE - CEILING DTL

DWG NO. 82

TO BE DISCUSSED: TO CREATE THE SENSE OF THE PANELS BEING OLD, I PROPOSE WE MAKE A NUMBER OF PLASTER INSERTS WHICH ARE PRE-PAINTED AND FIXED IN ON-SITE, THESE WOULD BE SCULPTED TO APPEAR AS 'BLOWN/WARPED' PANELS.

ALSO, DISCUSS REMOVING A HORIZONTAL BEAM FROM EACH PANEL AND CASTING WARPED REPLACEMENTS, WHICH ARE FITTED TO INCREASE ILLUSION OF IT BEING WARPED

<i>The Favourite</i>			
PRODUCTION/DRAWN	DATE	SET NO.	SCALE
SECRET CORRIDOR	06 APR	1	VARIOUS
DRAWN	DATE	SET NO.	SCALE
SECRET CORRIDOR	06 APR	1	VARIOUS
DESIGNED	DATE	SET NO.	SCALE
SECRET CORRIDOR	06 APR	1	VARIOUS
CHECKED	DATE	SET NO.	SCALE
SECRET CORRIDOR	06 APR	1	VARIOUS
APPROVED	DATE	SET NO.	SCALE
SECRET CORRIDOR	06 APR	1	VARIOUS

THE GREAT HALL









CONCEPT FOR TROMPE L'OEIL WALL

THE SPA

THE FAVOURITE SPA & BATH CONCEPT







THE BROTHEL









THE KITCHEN

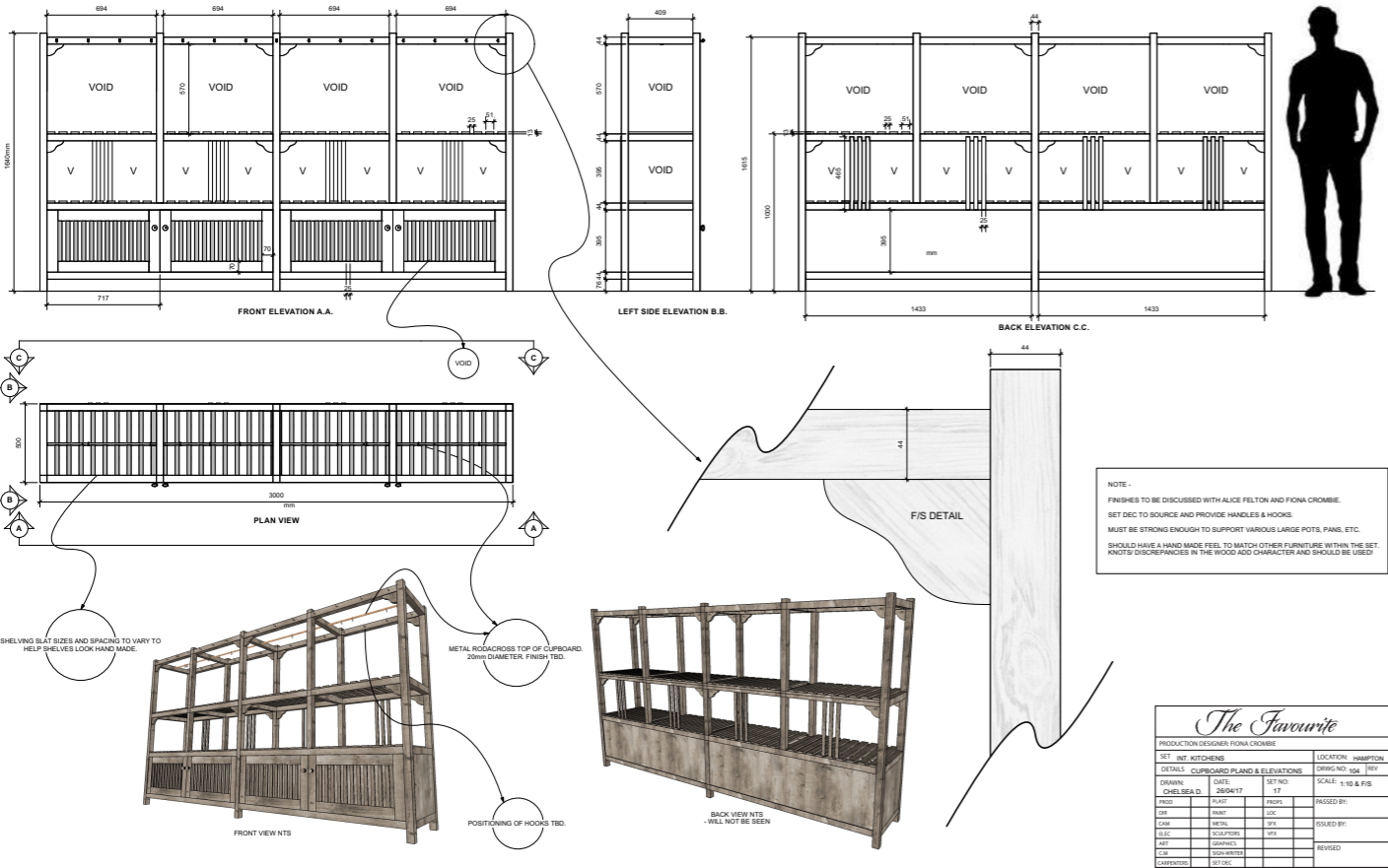






The Favourite HAMPTON COURT - INT. KITCHENS - CUPBOARD PLAN AND ELEVATIONS
SCALE - 1:10 @ A1

DWG104

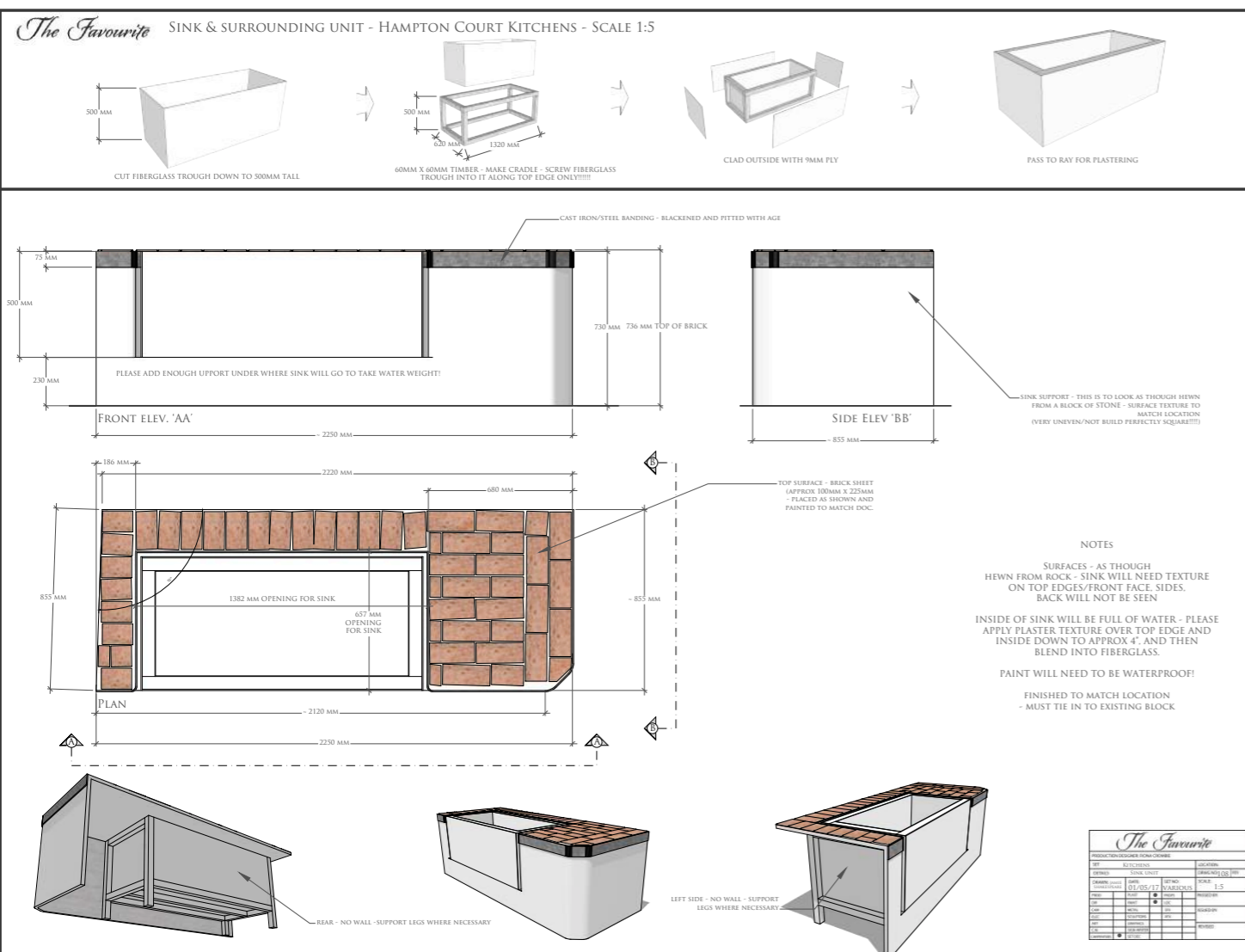


The Favourite

PRODUCTION DESIGNER: FIONA CROMBIE				LOCATION: HAMPTON	
SET	INT. KITCHENS	DATE	17	DRAWING NO.	404
DETAILS	CUPBOARD PLAN & ELEVATIONS	SCALE	1:10 & F/S	REV	
DRAWN BY	CHELSEA D.	DATE	20/04/17	ISSUED BY:	
PROG	PLANT	PROPS		REVISED	
DR	PAINT	LOC			
CORR	RENT	SET			
ESC	SCULPTORS	STY			
ART	GRAPHICS				
CM	PROP-MAKERS				
COMPONENTS	SET DEC.				



KITCHEN FURNITURE



KITCHEN FURNITURE

CARRIAGES



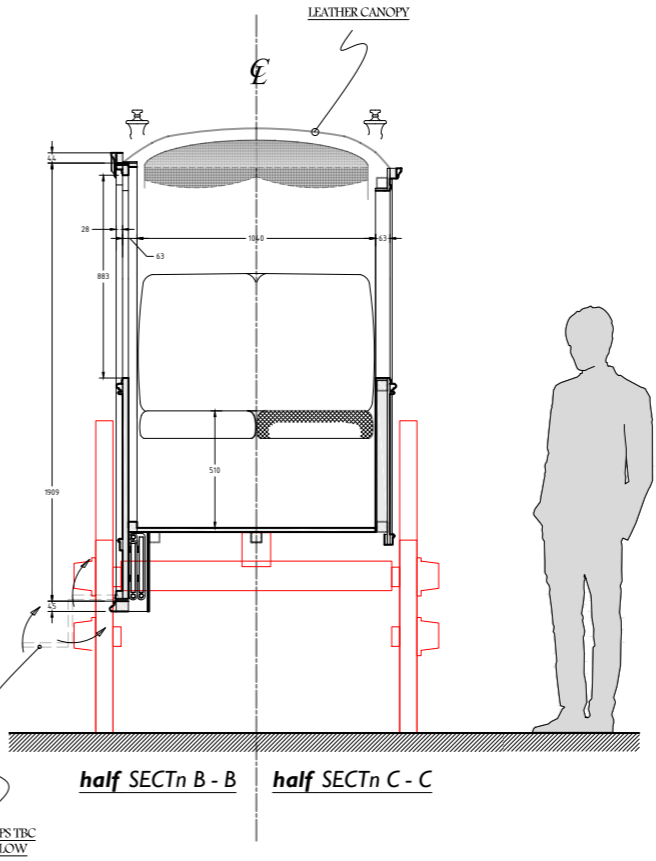
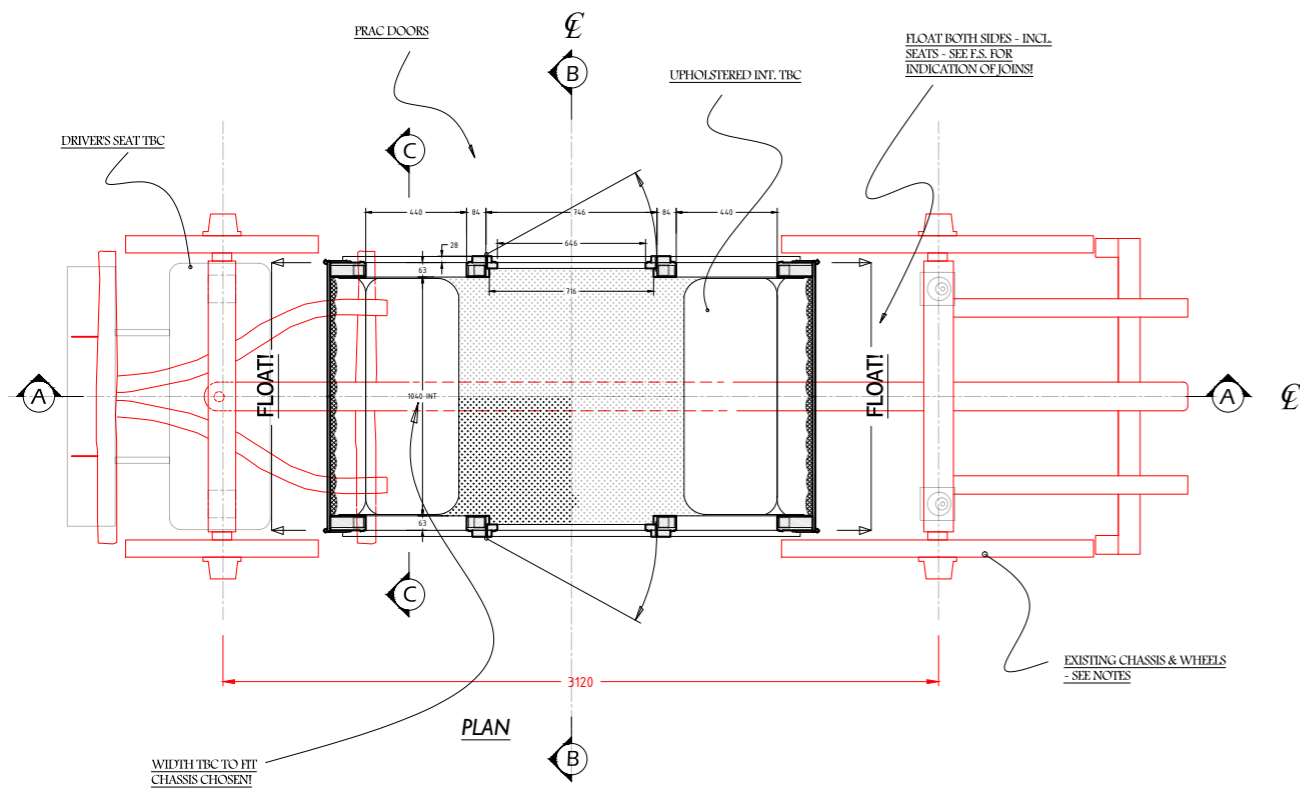
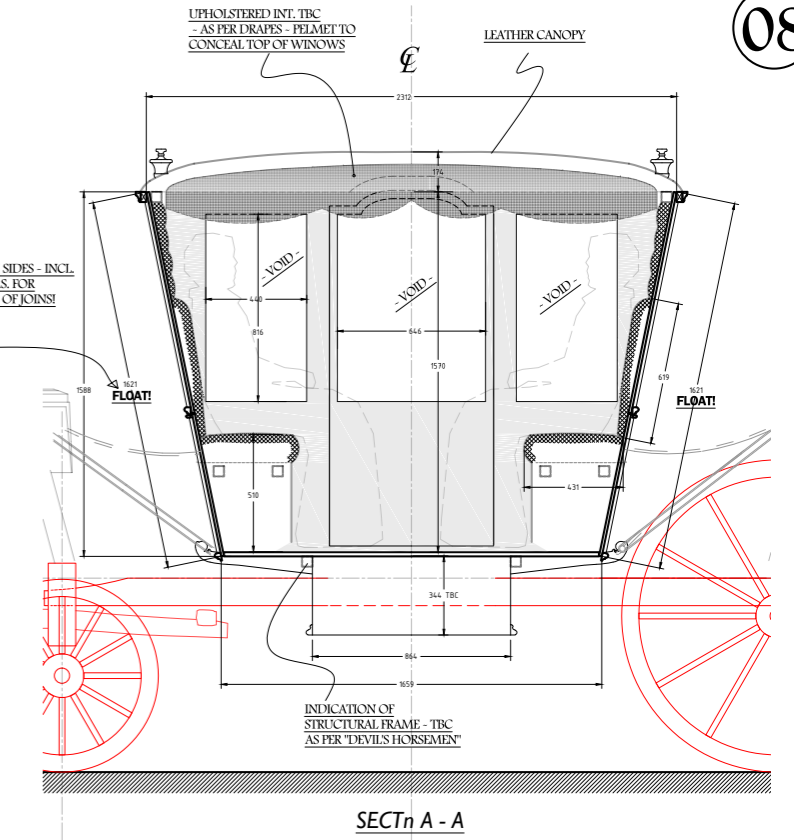
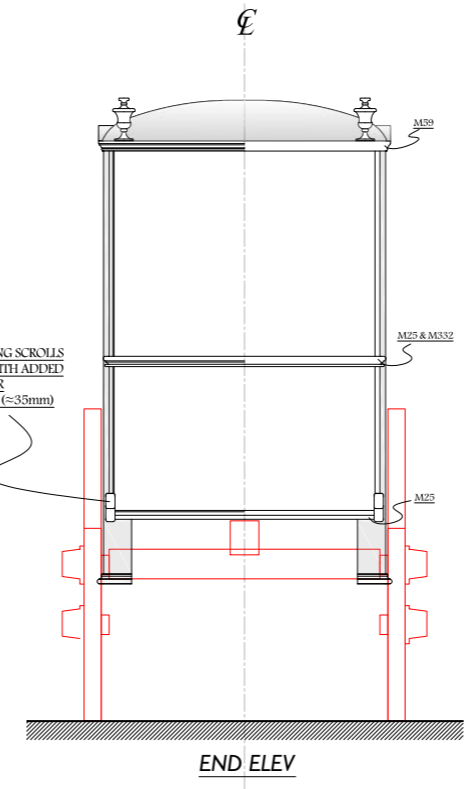
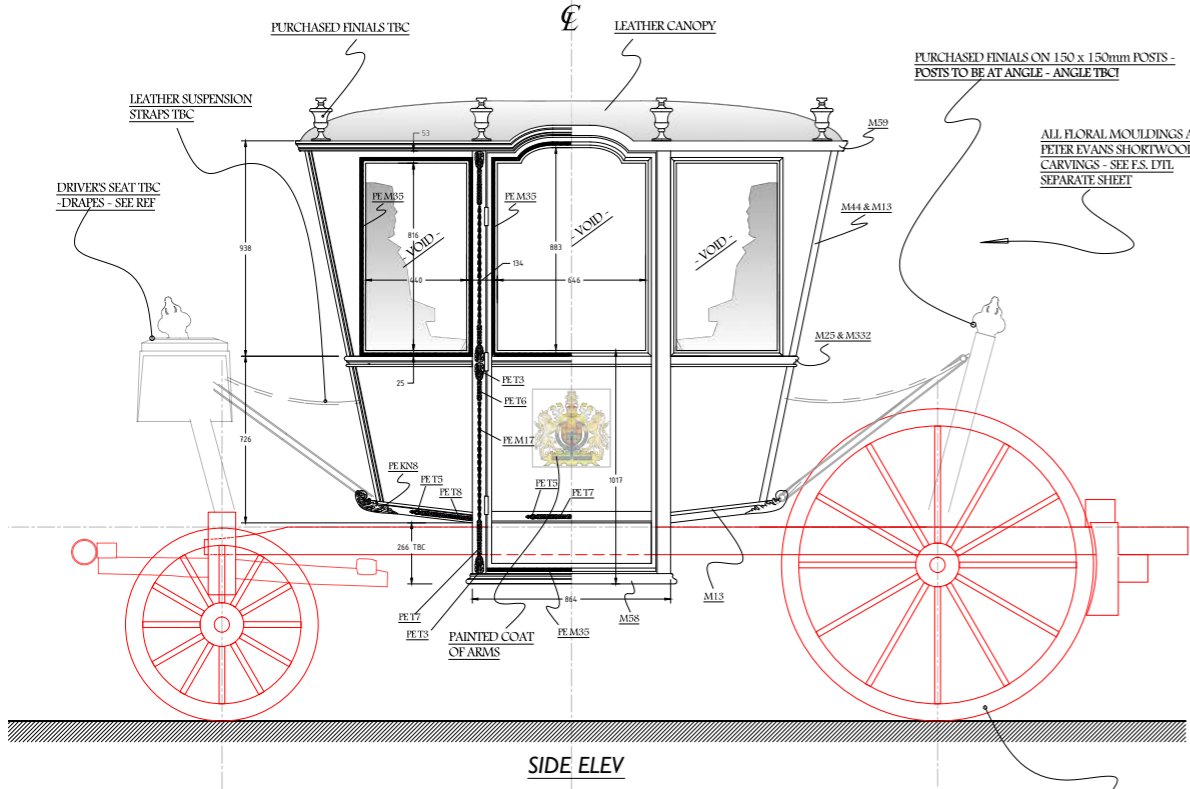


SIDE ELEV



END ELEV

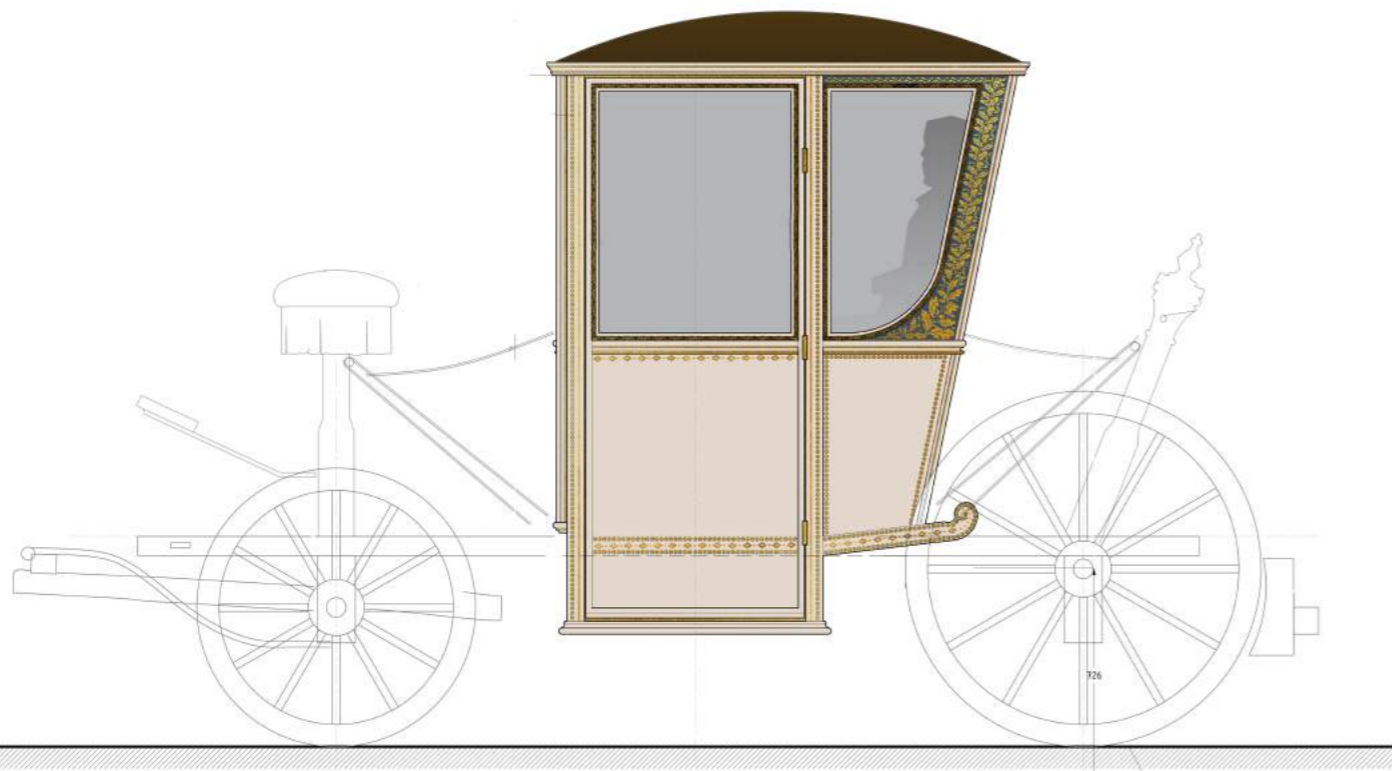
QUEEN ANNE'S CARRIAGE CONCEPT



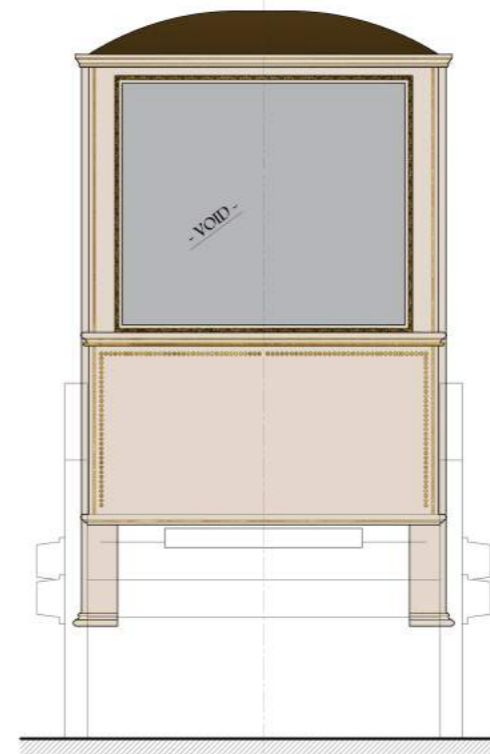
NOTES!

- USE / ADAPT EXISTING CHASSIS & WHEELS. CHASSIS INDICATED IS NOT FINAL.
- CARRIAGE TO BE SUSPENDED FROM POSTS OR FIXED TO CHASSIS TO APPEAR AS SUSPENDED - TBD.
- CARRIAGE TO INCORPORATE FOLDING STEPS ON BOTH SIDES - TBC.
- PAINTED SURFACE DETAIL & GRAPHICS TBD.

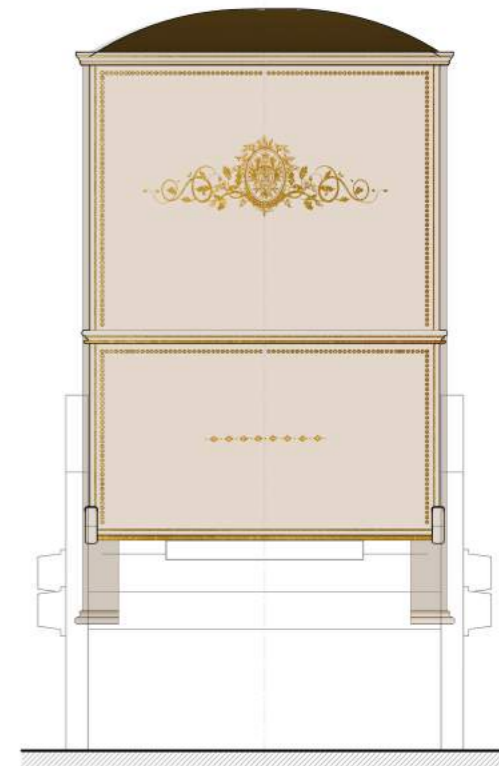
<i>The Favourite</i>				
PRODUCTION DESIGNER: FIONA CROMBIE				
SET	EXT / INT. QUEEN ANNE'S CARRIAGE			LOCATION: VARIOUS
DETAILS	PLAN & ELEV			DRAWG NO: 08 REV
DRAWING	AGIS	DATE: 16/02/17	SET NO:	SCALE: 1:10
PROJ:	PLAT	PROP:	PASSED BY:	
DR:	FRONT	LOC:		
CAM:	METAL	SFX:	ISSUED BY:	
ELEC:	SCULPTORS	VFX:		
ART:	GRAPHICS		REVISED	
C.M:	SIGN WRITER			
CARPENTERS:	SET DEC:			



SIDE ELEV



FRONT ELEV



REAR ELEV

SARAH'S CARRIAGE CONCEPT



PALACE EXTERIOR



PALACE EXTERIOR
CONCEPT



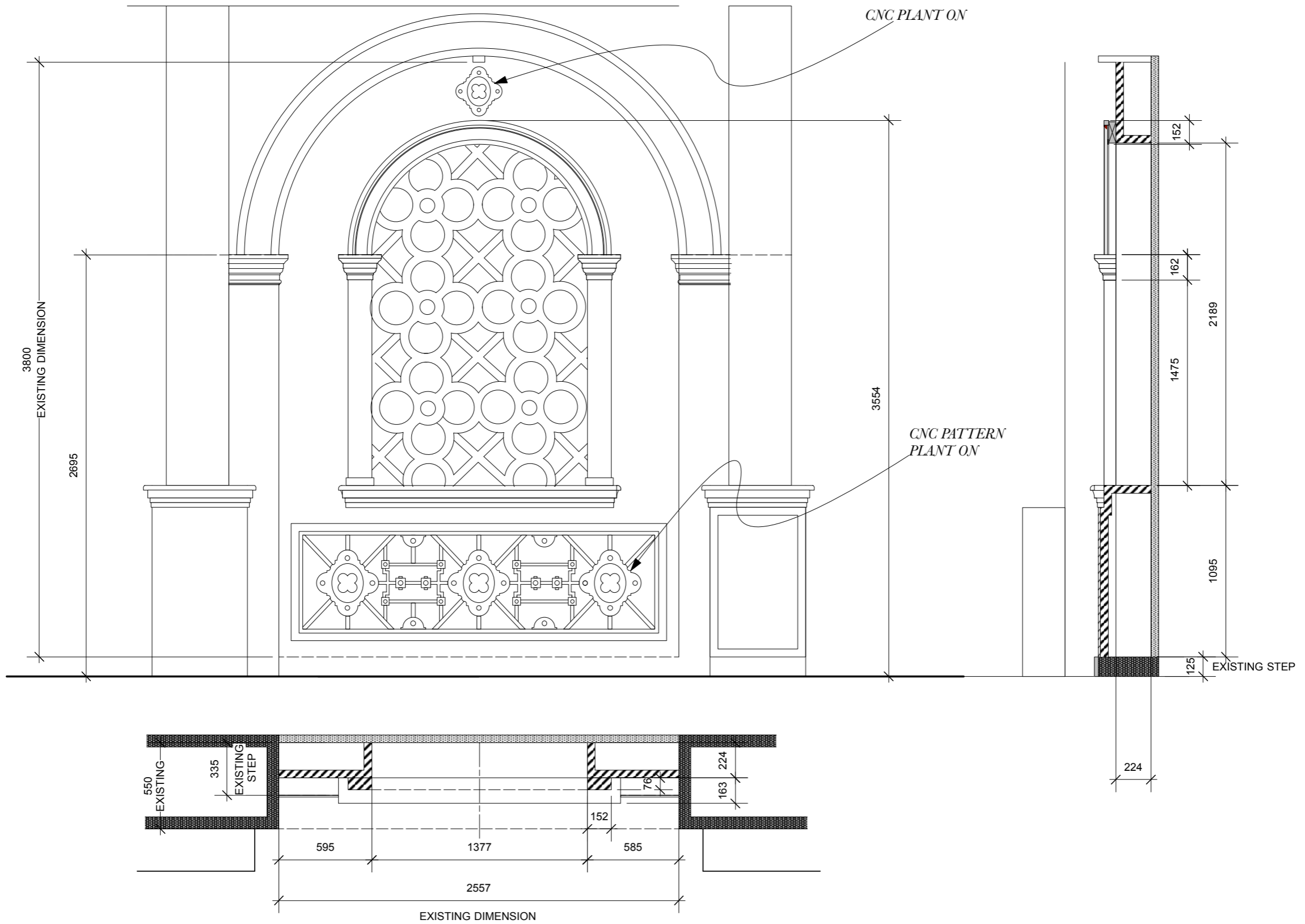
PALACE EXTERIOR CONCEPT



The Favourite

EXT ST JAMES' PALACE - ARCH INFILLS
SCALE 1:20@ A3
LOC: HATFIELD

DWG
25



DETAILS

RABBIT HUTCHES

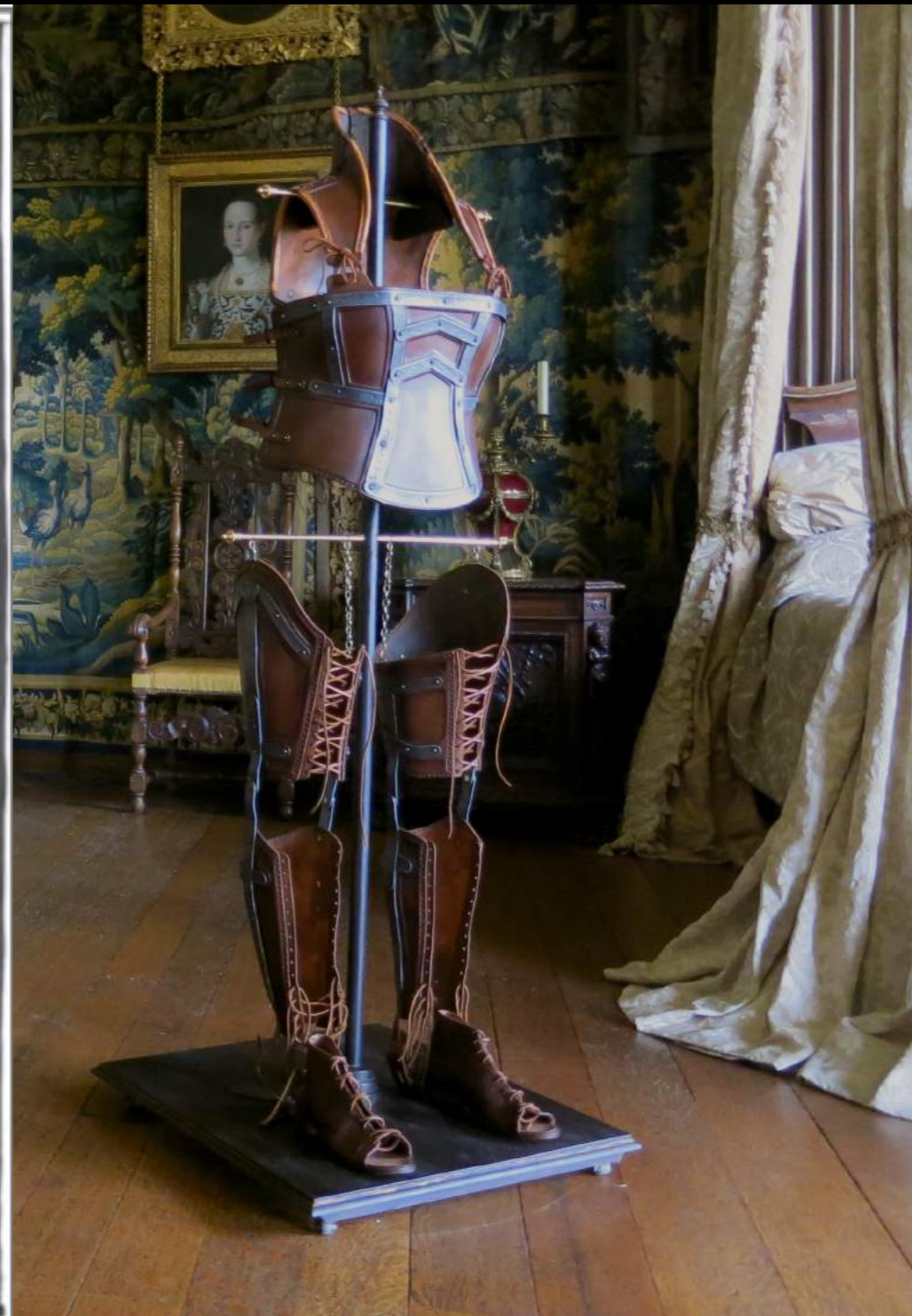
The Favourite

RABBIT HUTCHES - 4 OFF - TO BE BUILT BY ANARCHY
 - DWG IS AVAILABLE ON DROPBOX AS SKP FILE

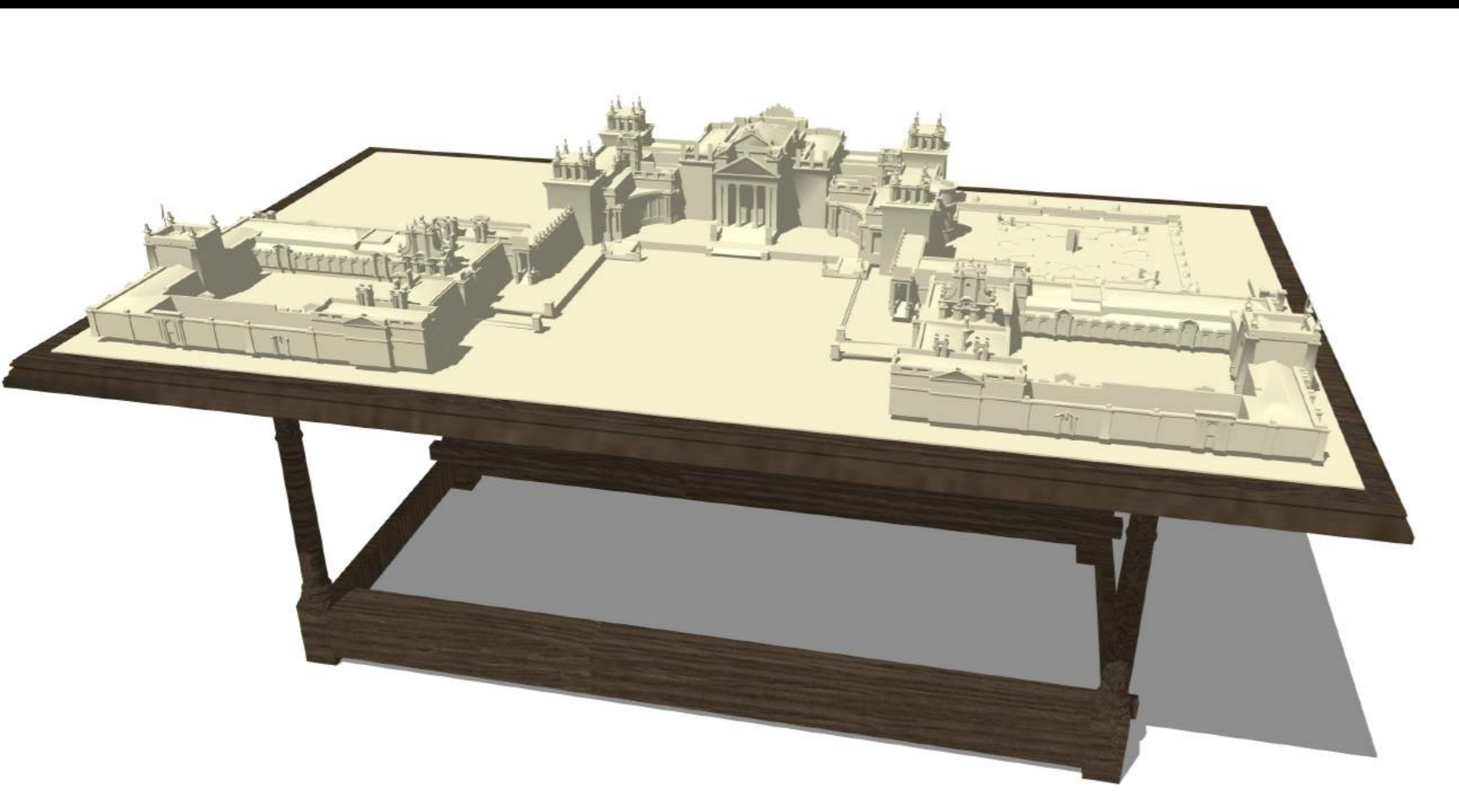


<i>The Favourite</i>			
PRODUCTION DESIGNER: FIONA CROMBIE			
SET	INT. ANNES APARTMENTS	LOCATION: HATFIELD	
DETAILS	RABBIT HUTCHES	DRWG NO: 37	REV
DRAWN:	DATE:	SET NO:	SCALE:
14/02/17	14/02/17	1	F/S SKP MODEL
PROD	PLAST	PROPS	PASSED BY:
DIR	PAINT	LOC	
CAM	METAL	SFX	ISSUED BY:
ELEC	SCULPTORS	VFX	J. SHAKESPEARE
ART	GRAPHICS		REVISED
C.M	SIGN-WRITER		
CARPENTERS	SET DEC		





LEG BRACES



PAPER ARCHITECTURAL MODEL



FOOD, GLORIOUS FOOD











T H A N K Y O U

And, incase you were wondering, 80 000 candles were used in the lighting of this film. And we had 17 rabbits happily hopping around.

