



Beauty and the Beast

PRODUCTION DESIGNER: SARAH GREENWOOD
SUPERVISING ART DIRECTOR: NIALL MORONEY
SENIOR ART DIRECTOR: JAMES FOSTER
SENIOR ART DIRECTOR: NICK GOTTSCHALK
ART DIRECTOR: ELAINE KUSHMIKO
ART DIRECTOR: MIKE STALLION
ART DIRECTOR: MARK SWAIN
ART DIRECTOR (SET DECORATION): CHOI HO MAN
STANDBY ART DIRECTOR: EMMA MACDEVITT
SNR ASSISTANT ART DIRECTOR: MATTHEW ROBINSON
ASSISTANT ART DIRECTOR: WILL COUBOROUGH
ASSISTANT ART DIRECTOR: OLIVER GOODIER
ASSISTANT ART DIRECTOR: RHYS IFAN
ASSISTANT ART DIRECTOR: PATRICIA JOHNSON
ILLUSTRATOR: JOANNA BUSH
ILLUSTRATOR: SIMON GUSTAFFSON
ILLUSTRATOR: EVA KUNTZ
GRAPHIC DESIGNER: GEORGINA MILLET
SET DECORATOR: KATIE SPENCER



BALLROOM - THE MASKED BALL



BALLROOM - FROZEN



BALLROOM - NEGLECTED

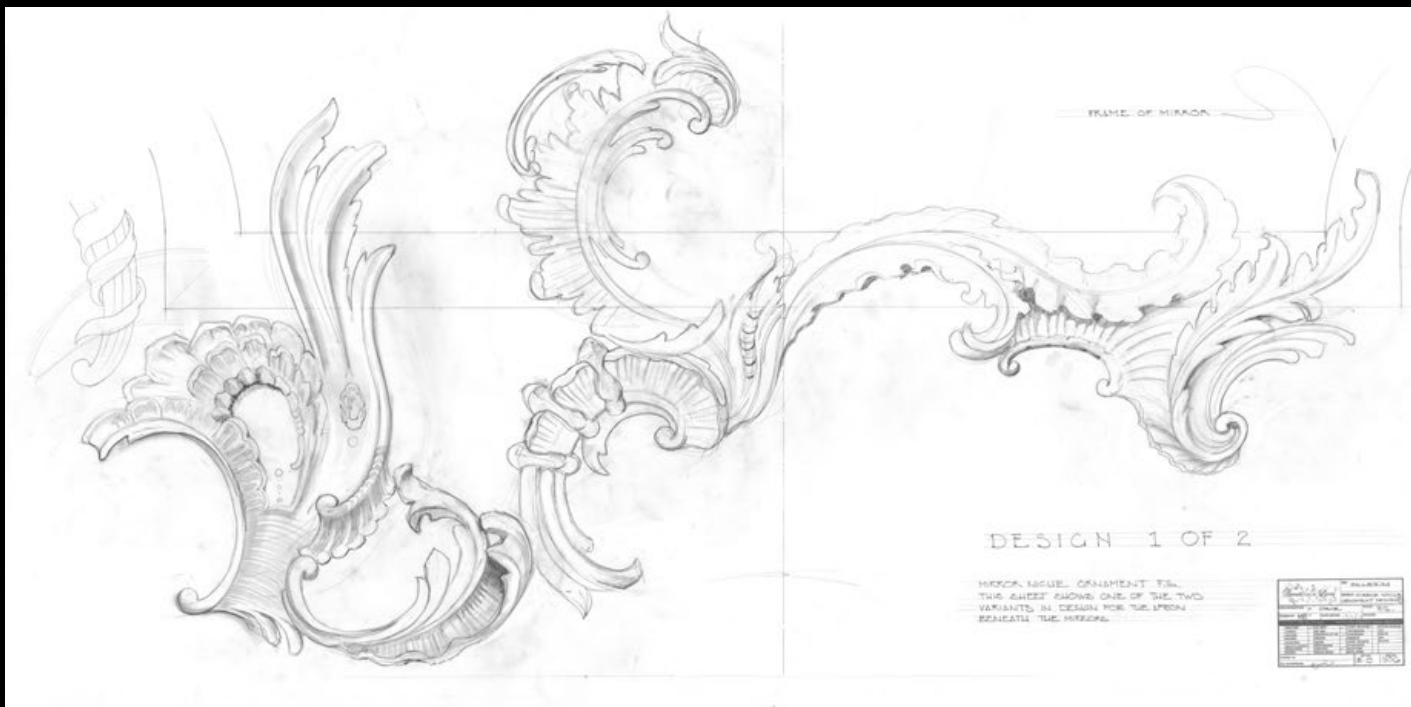
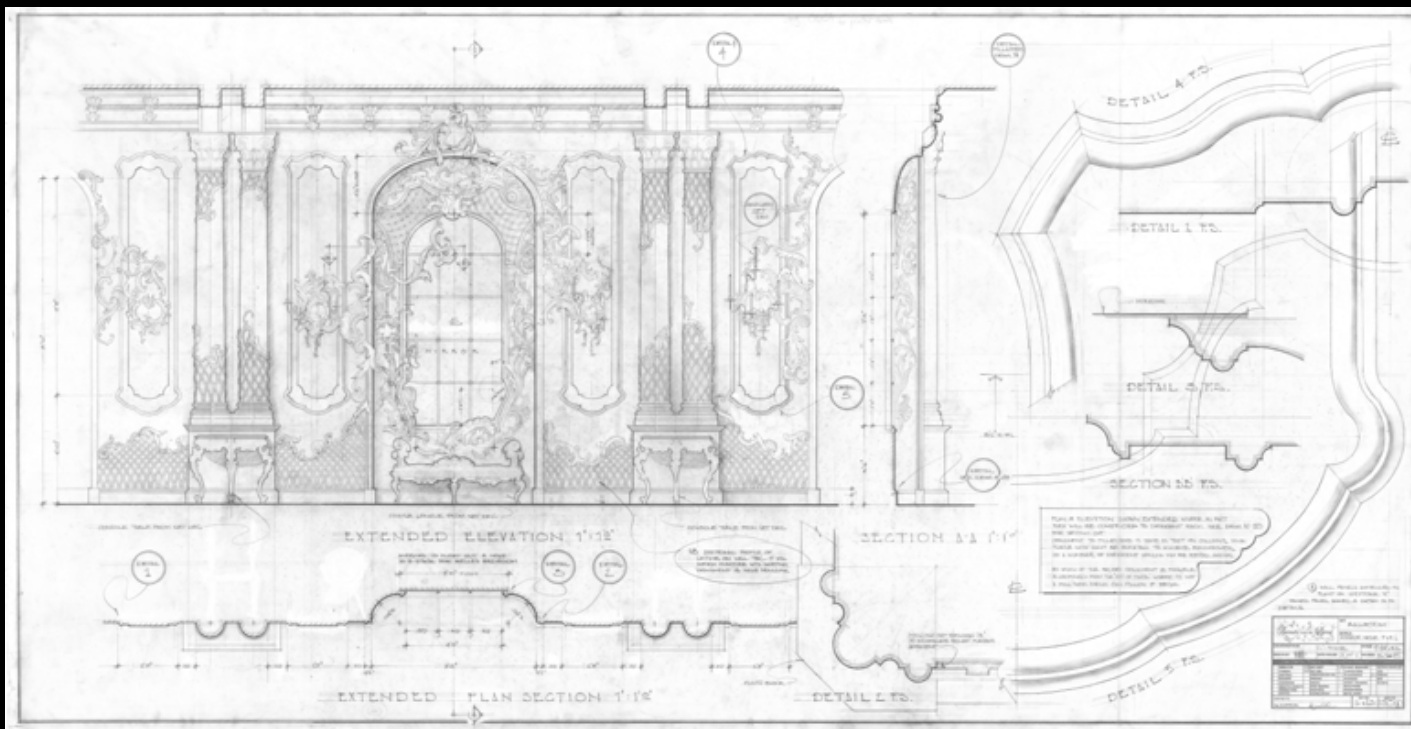




BALLROOM - ENCHANTED



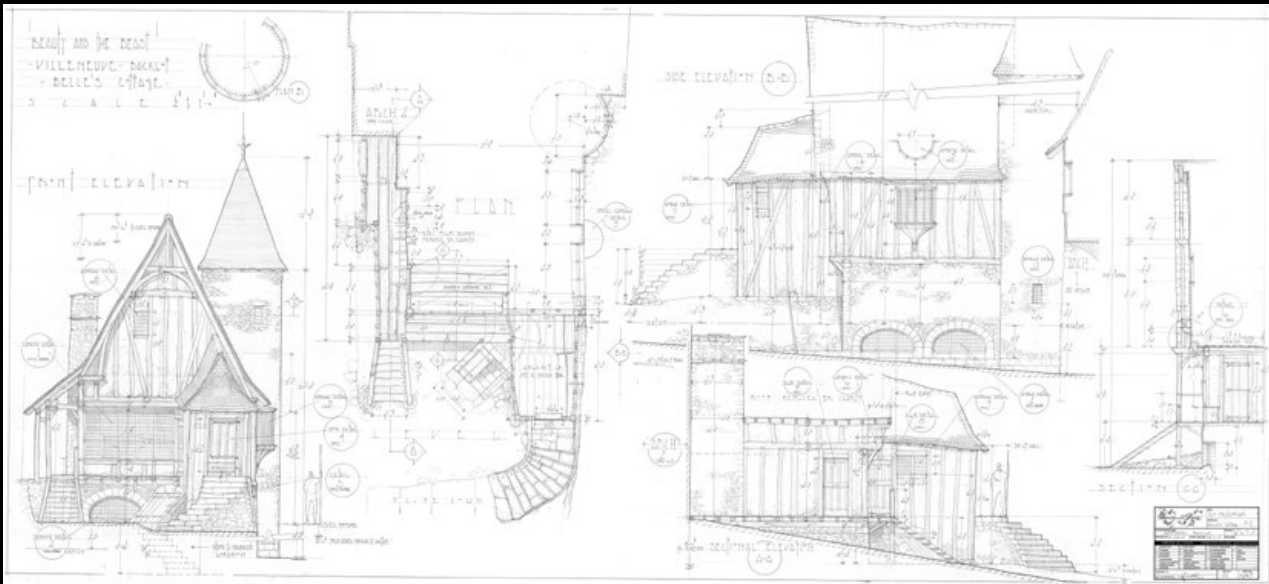
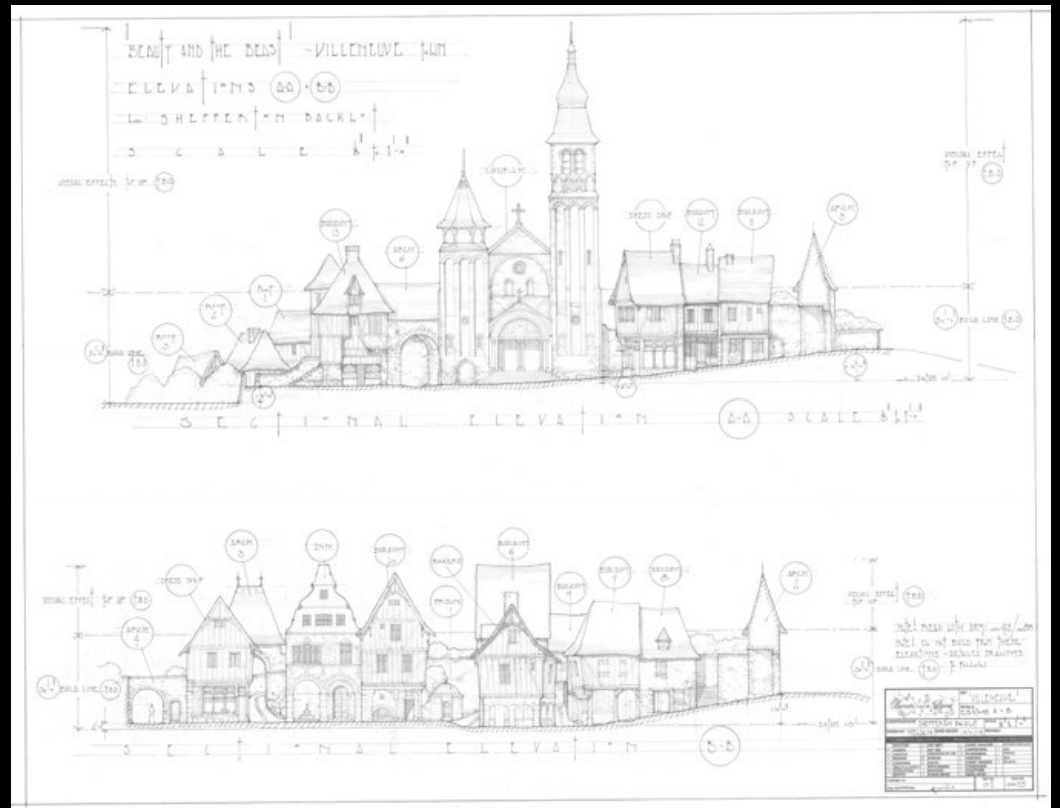
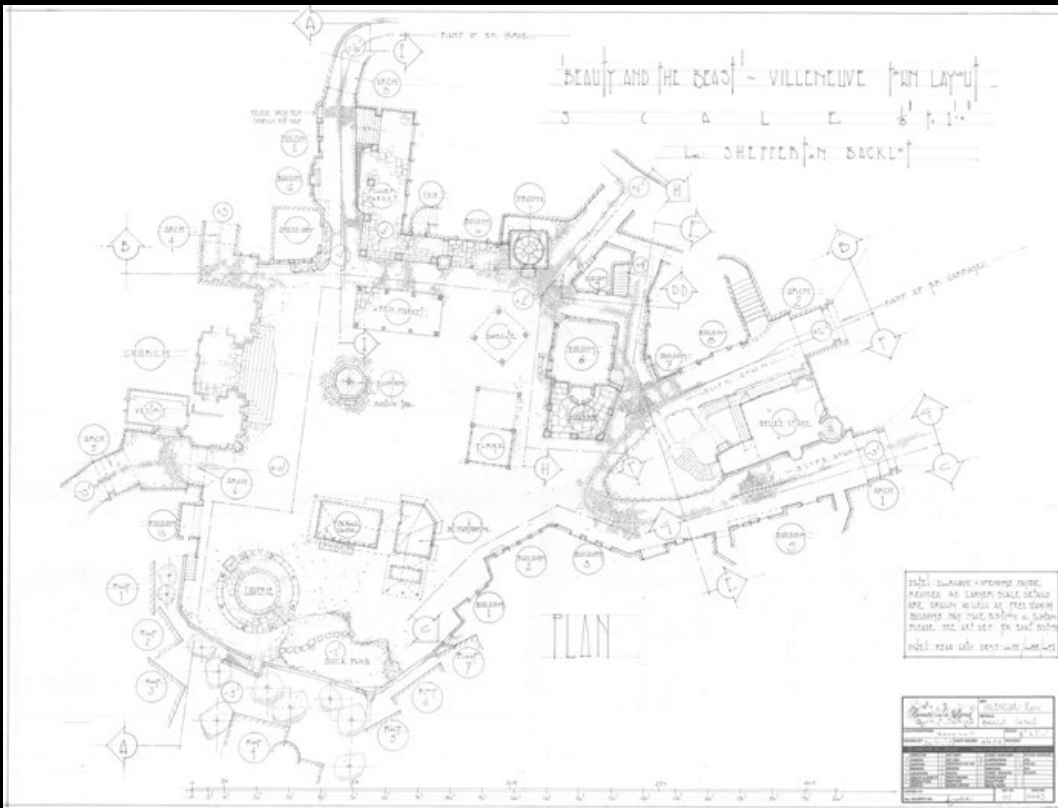
BALLROOM - CELEBRATION















MAURICE'S WORKSHOP



EXT CASTLE



Est Castle Maurice Arrival for Hedge v1



Glow with landscapes beyond revised_3 WIP







CASTLE GROUNDS - STABLES



CASTLE GROUNDS - ROSE GARDEN AND STABLES



ENTRANCE HALL



ENTRANCE HALL

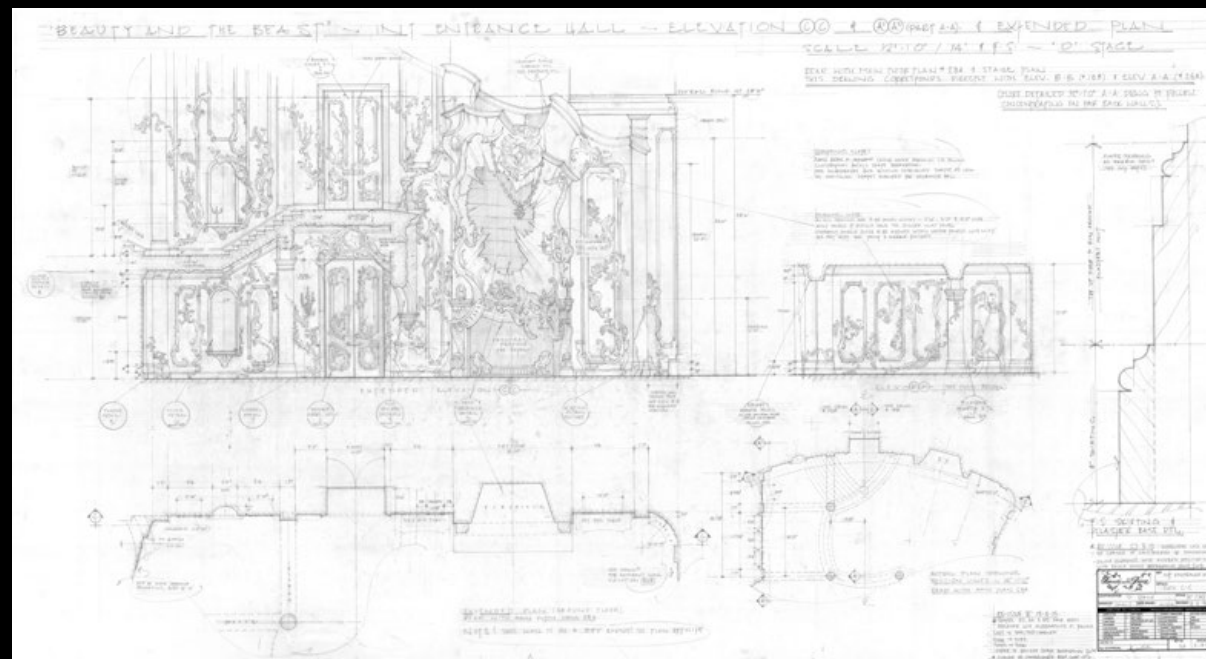
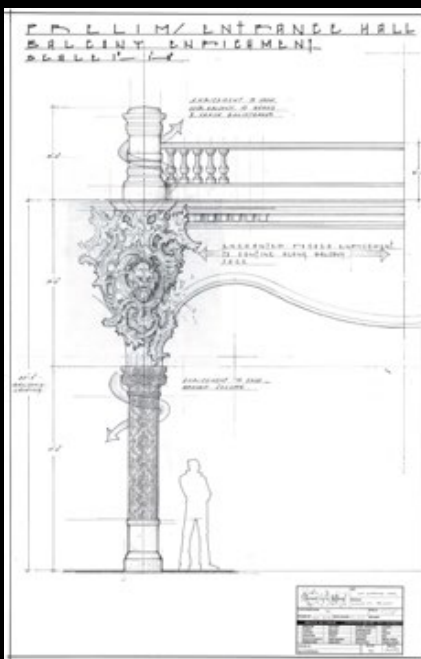
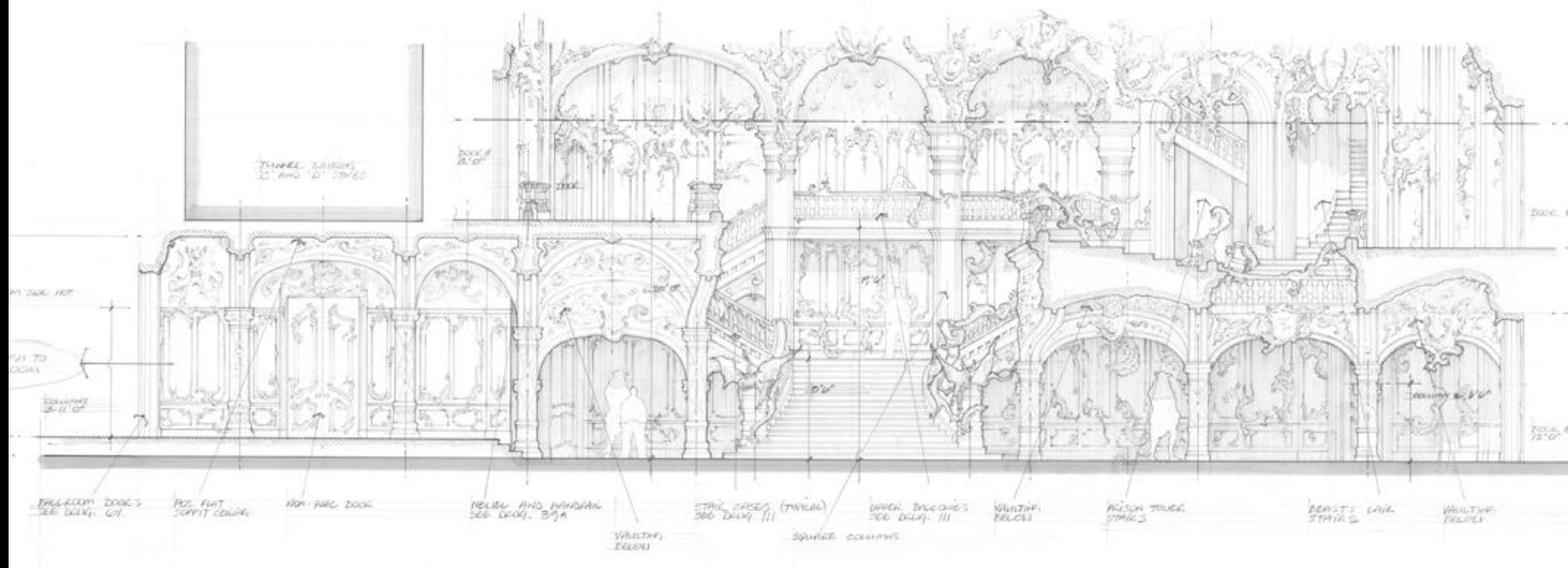


ENTRANCE HALL



ENTRANCE HALL

"BEAUTY AND THE BEAST" ~ INT. CASTLE, ENTRANCE HALL
SECTION 'AA' (SEE PLAN, THIS SHEET) ~ SCALE 1/4" AND 1/8"





ENTRANCE HALL



ENTRANCE HALL

Looking Up With Beant in PG_v2



Looking up Below POV - a view out over Labyrinth EK



Looking down - Beant's POV_v2



Beant peering revised option1_v7 EK



Beant being dragged down_v10 EK



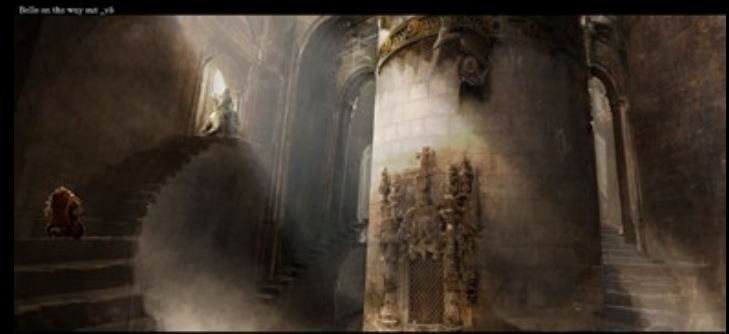
Beant peering revised option 2

8



View from Cat Rough Sketch_v5

Belle on the way out_v6







BEAUTY AND THE BEAST - COGSWORTH

DATE	DESCRIPTION
1/1/00	CONCEPT
2/1/00	DESIGN
3/1/00	CONSTRUCTION
4/1/00	PAINTING
5/1/00	ASSEMBLY
6/1/00	FINISHING
7/1/00	INSTALLATION



CIRCULAR MIRRORING TO CLOCKFACE AROUND WINDERS TO EMPHASIZE "EYES"

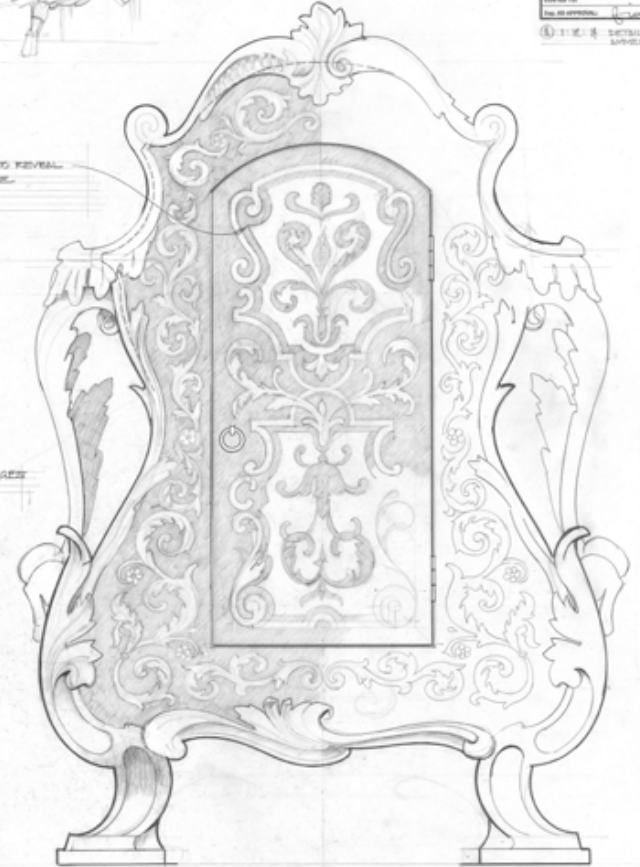
SPRING CATCH

ITEMS COMPOSING "TOPHAT" TO BE WOODEN IN MEDIUM RELIEF OVER, 2. BELLING ALAB. PANEL, ALLOWING THE SWING OF THE PENDULUM TO BE SEEN



OPERATING DOOR ON REAR TO REVEAL WORKINGS AND GUNGE-WORK

FRONT BOWS OUT TO SUGGEST A PINCH

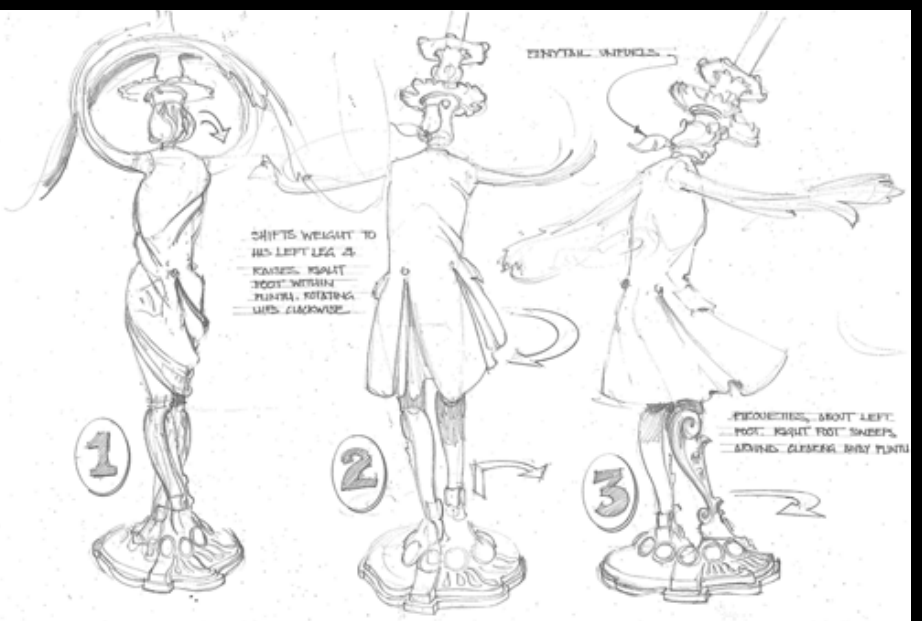
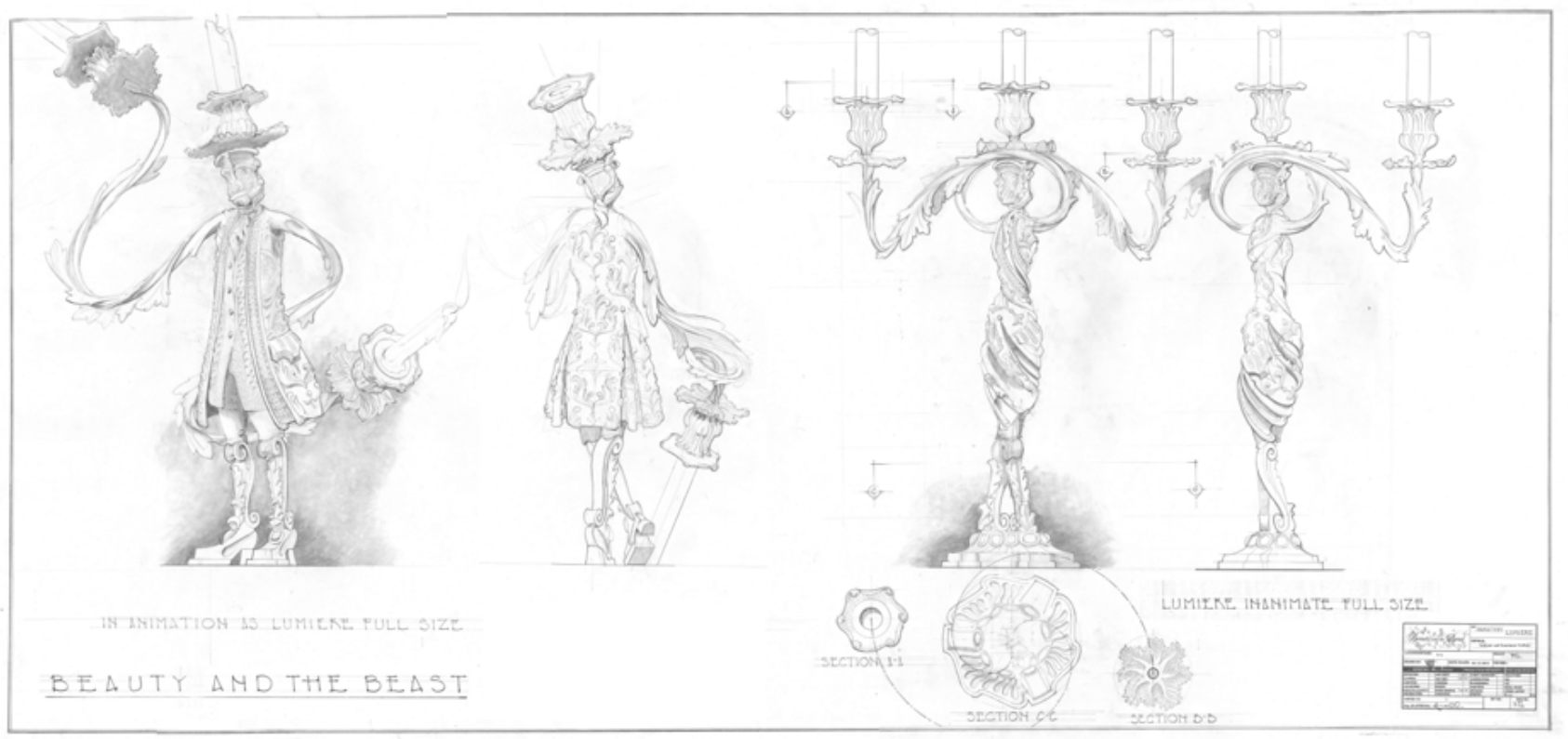


FRONT ELEVATION F.S.

SIDE ELEVATION F.S.

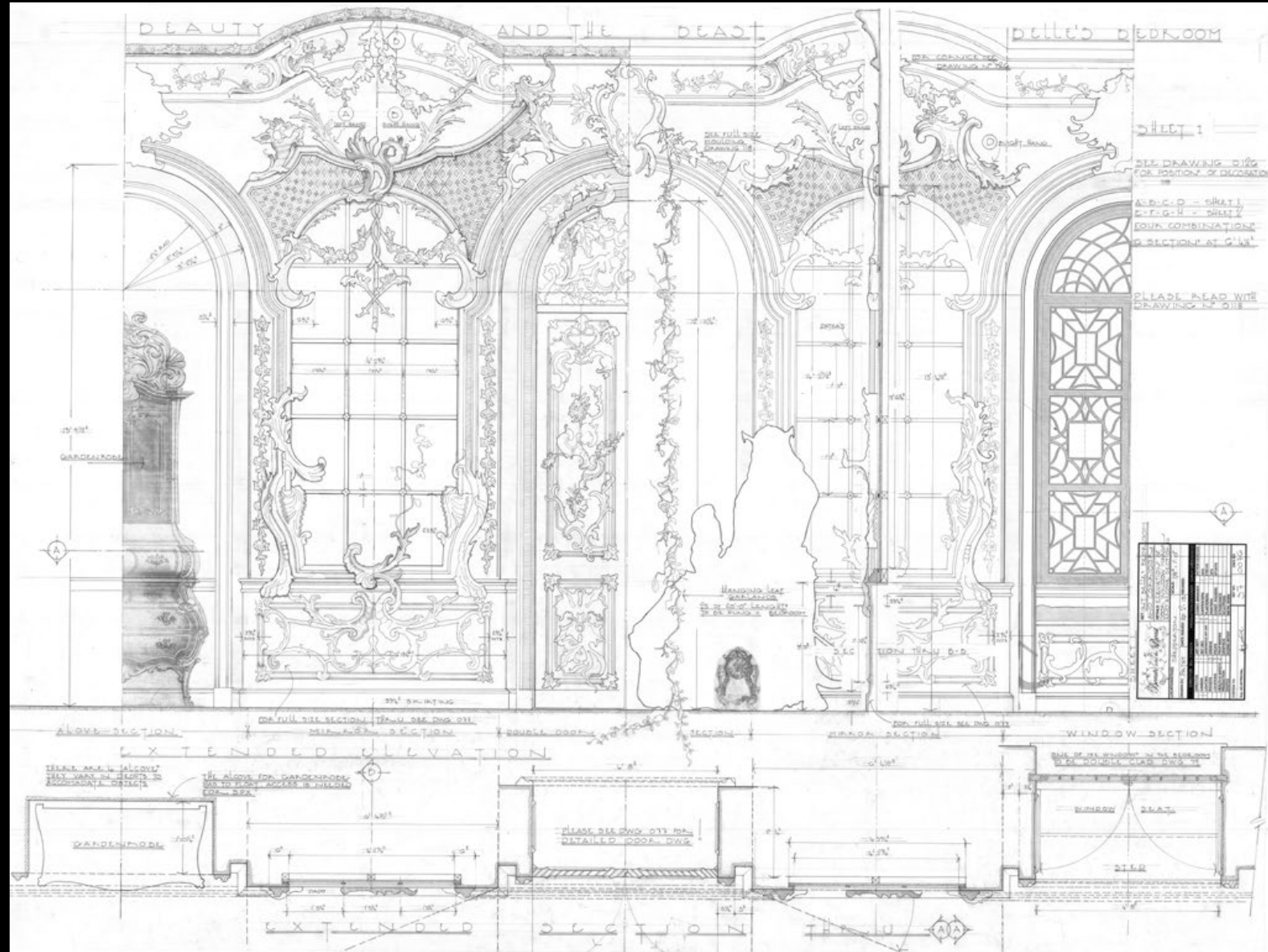
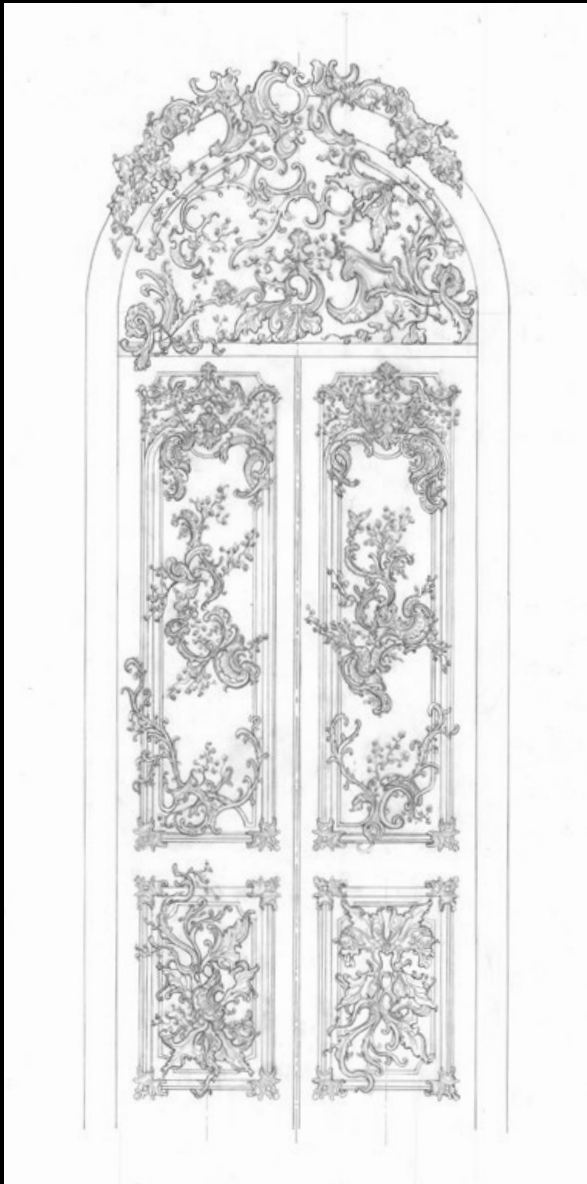
REAR ELEVATION F.S.

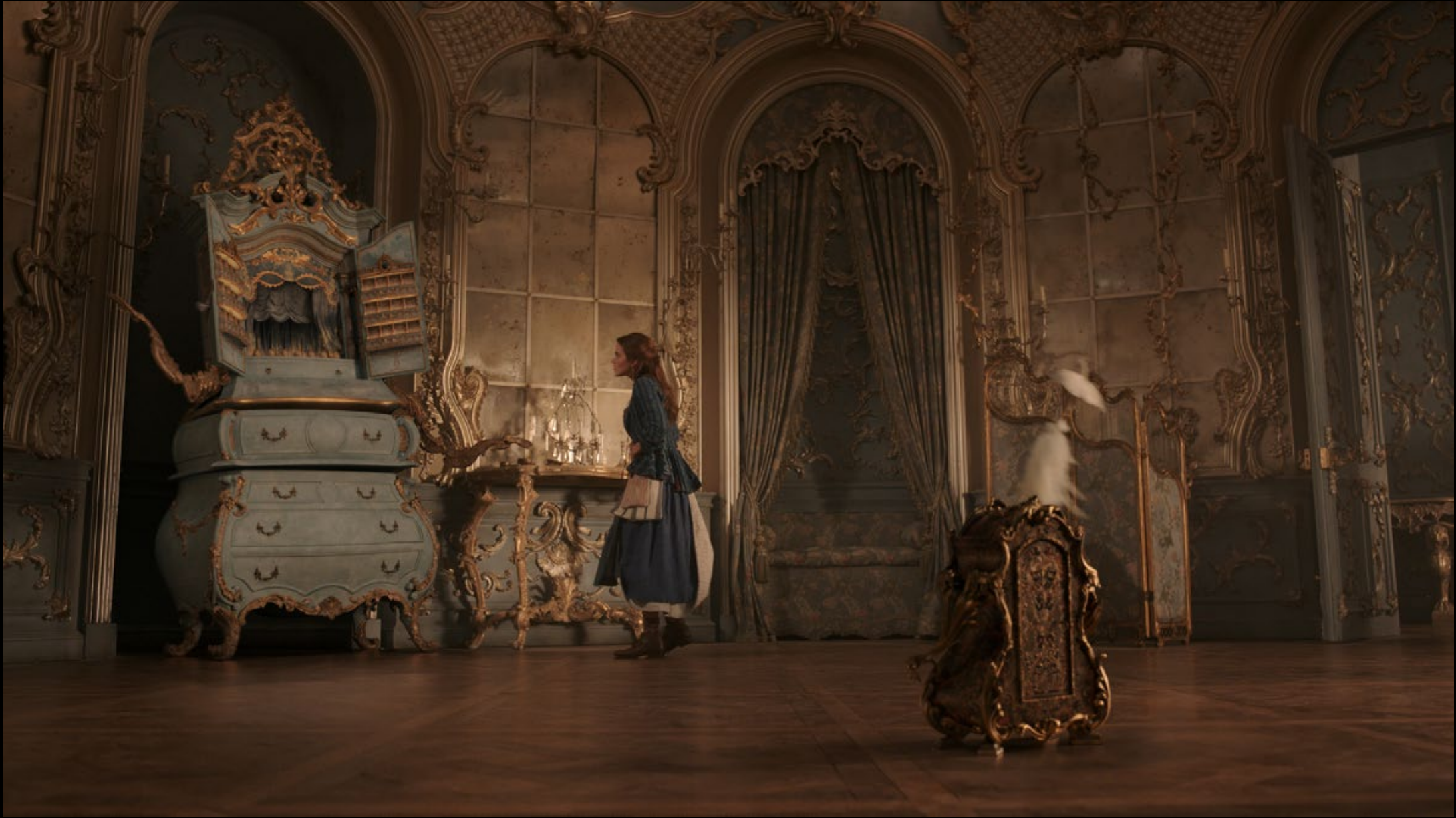






BELLE'S BEDROOM





BELLE'S BEDROOM





POSSIBLE: USE POPP. CARRIAGE.

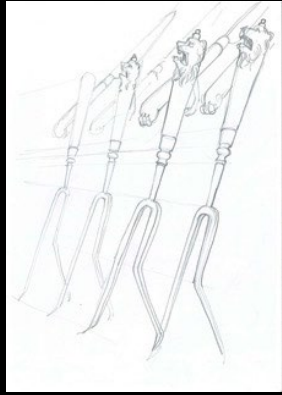
Bill has idea, asking a special carriage.



After Bill, from the designer of a Bill's current project, Bill



Answer to a look of Bill.



on 'action', every other champagne bottle would be run out, with a scolding noise, into the 'fire' position. Upon firing, there could be a flash in the associated compartments, a 'boom' could result.

Think how shape of the neck reminiscent of a yellow, bracelet.



Bill, surprised as 'Bill's' idea.



Little Liana, Bill, of making 'computer'



John, who little is, 'my' thinking.



Bill, for a set designer, looking Liana.



Bill, a few others, especially before dinner, since he had a 'computer' lamp for himself.



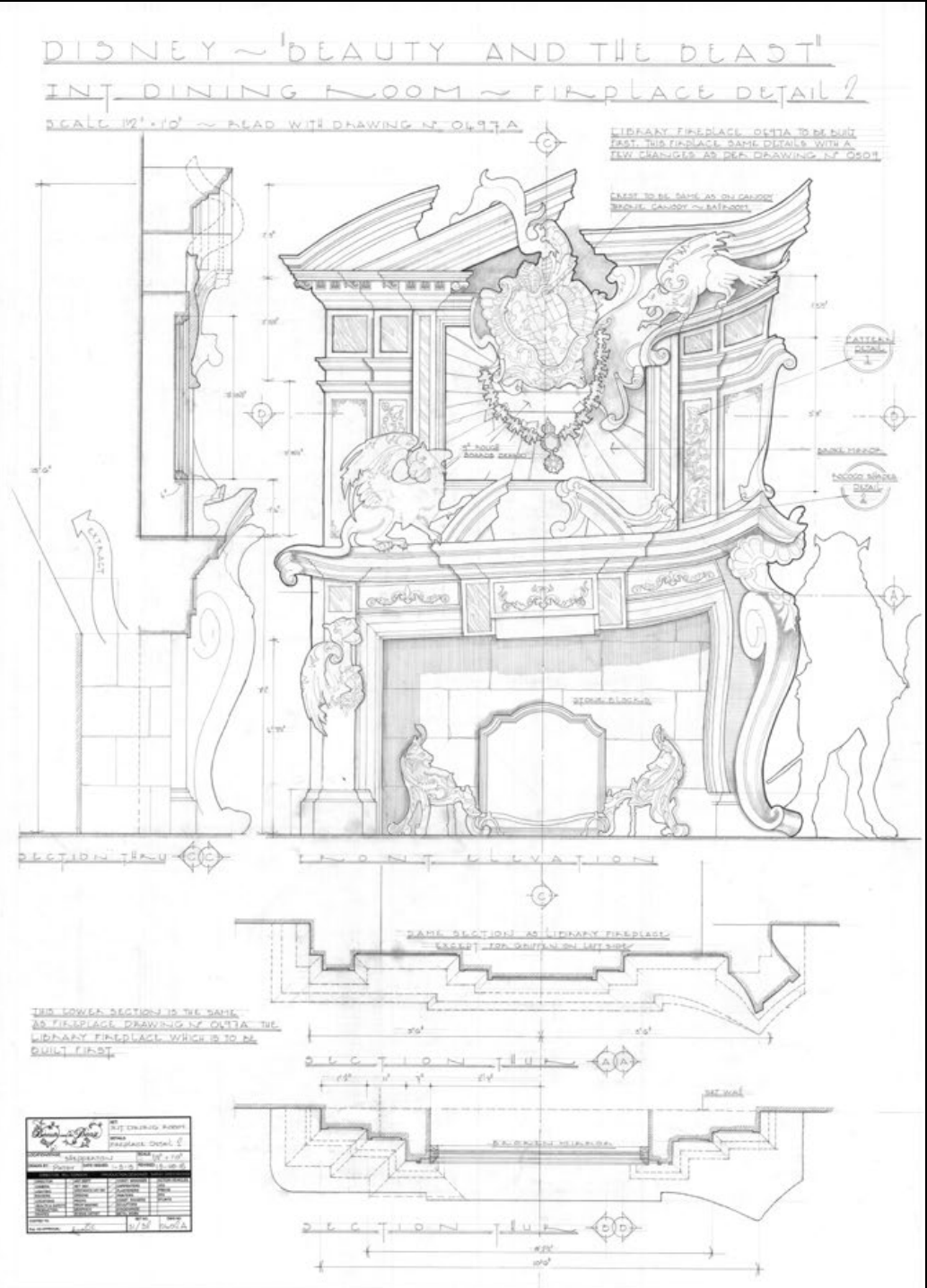
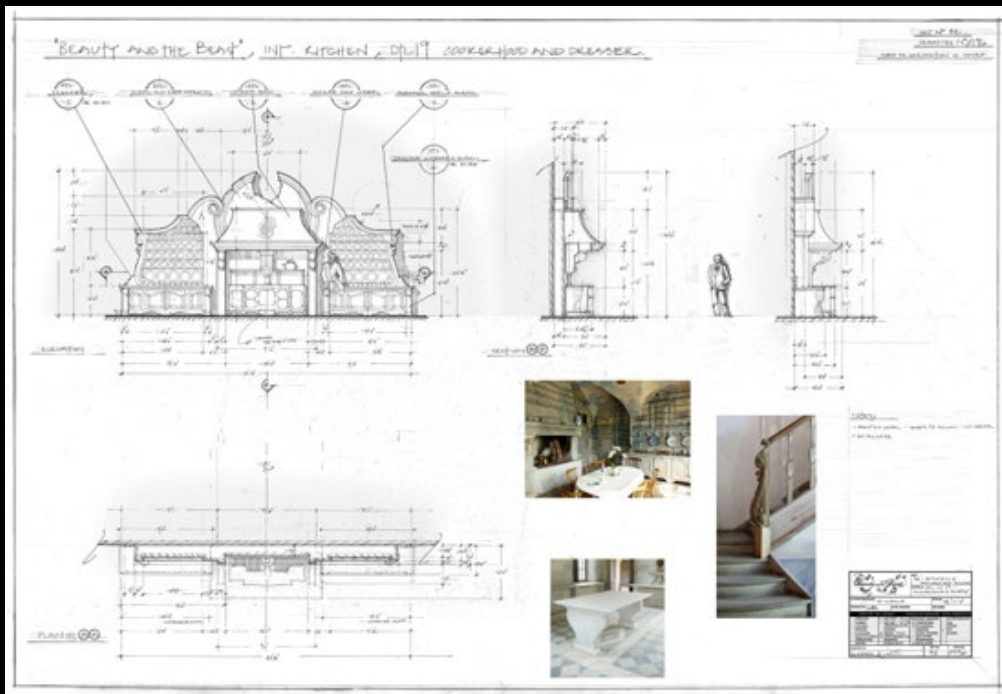
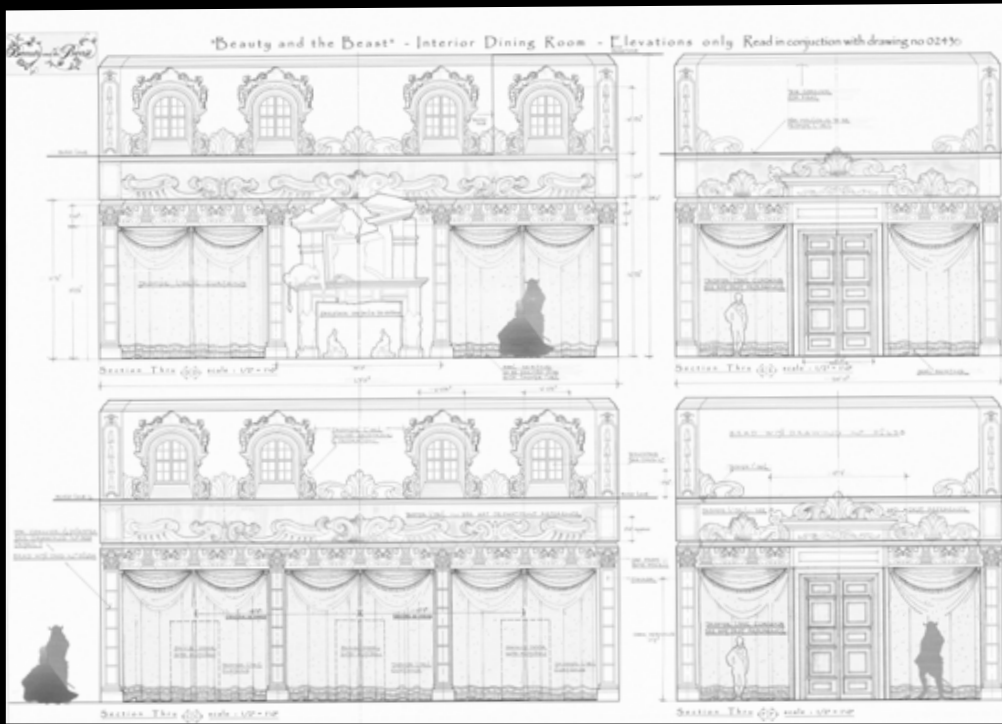
Bill, who little is, 'my' thinking.



Little Liana, Bill, of making 'computer'









DINING ROOM











KS6-Beast roof climb 01 v02

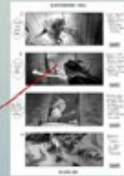
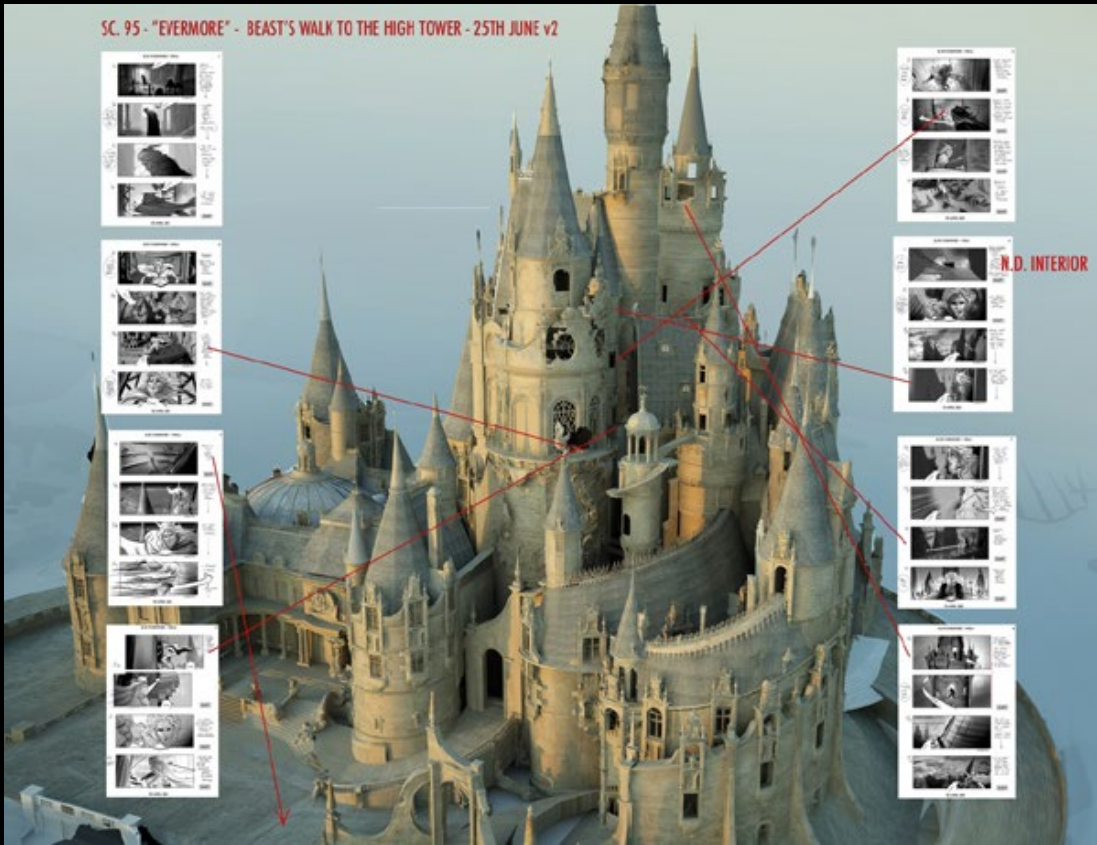








SC. 95 - "EVERMORE" - BEAST'S WALK TO THE HIGH TOWER - 25TH JUNE v2



N.D. INTERIOR

